



Ordering Code

RE — **01**

Series Code
RE: Ordinary Type
Flow Control Valve

Port Size
01: G1/8"
02: G1/4"
03: G3/8"
04: G1/2"

Graphic Symbol

Specification

Model	RE-01	RE-02	RE-03	RE-04
Port Size	G1/8"	G1/4"	G3/8"	G1/2"
Working Medium	Air			
Working-pressure Range	0~0.95MPa			
Operating Temperature Range	0~60°C			



Ordering Code

HSV — **03**

Specification Code
HSV: Hand
Sliding Valve

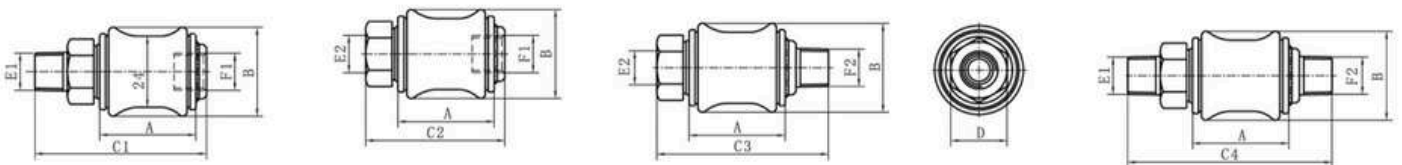
Port Size
01: G1/8"
02: G1/4"
03: G3/8"
04: G1/2"
05: G3/4"

Graphic Symbol

Specification

Model	HSV-01	HSV-02	HSV-03	HSV-04	HSV-05
Port Size	G1/8"	G1/4"	G3/8"	G1/2"	G3/4"
Flow Bore	4mm	7mm	10mm	12mm	18mm
Working Medium	Filtered Air				
Working-pressure	0~1.0MPa				
Ambient Temperature Range	5~60°C				
Working Force	20N			30N	

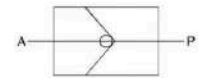
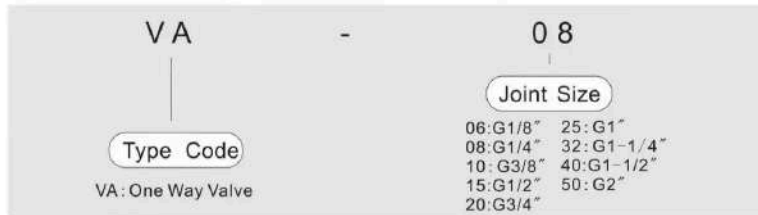
This valve is a two-position three-way hand sliding valve, which is usually installed in the piping to turn on/off air. When it is turned off, the air pressure in the pneumatic system is exhausted simultaneously.



型号\符号	A	B	C1	C2	C3	C4	D	E1	E2	F1	F2
HSV-06	30	Φ27.5	50	42.5	50	57.5	17	PT1/8	PT1/8	PT1/8	PT1/8
HSV-08	32.5	Φ30	58	47	58	69	19	PT1/4	PT1/4	PT1/4	PT1/4
HSV-10	39	Φ36	68.5	55.5	68.5	81.5	22	PT3/8	PT3/8	PT3/8	PT3/8
HSV-15	50	Φ44	85.5	70.5	85.5	100.5	30	PT1/2	PT1/2	PT1/2	PT1/2

Product Description

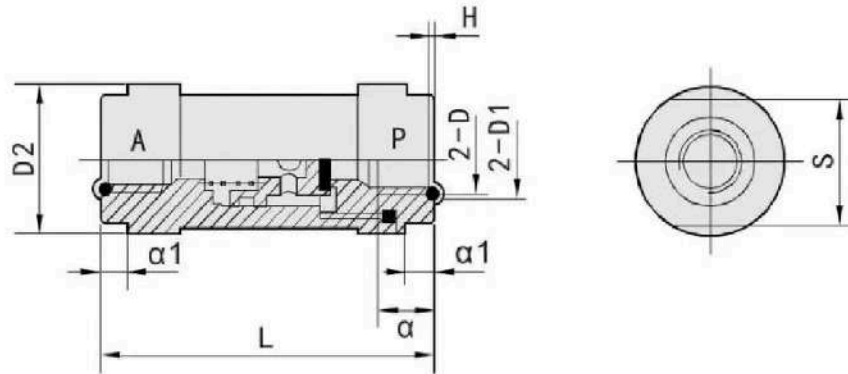
Ordering Code VA Series One Way Valve



Product Specifications

Model	VA-06	VA-08	VA-10	VA-15	VA-20	VA-25	VA-32	VA-40	VA-50
Working Medium	Clean air(40µm Filtration)								
Acting type	External control								
Working Pressure	0.05 to 0.8Mpa								
Max.Pressure	1.2Mpa								
Working Temperature	0 to 55°C								
Joint Size	G1/8"	G1/4"	G3/8"	G1/2"	G3/4"	G1"	G1"-1/4"	G1"-1/2"	G2"

Main Dimensions

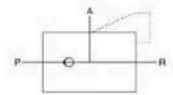


Model	D	D1	D2
VA-06	M10X1 G1/8	Φ13	Φ25
VA-08	M12X1.5 G1/4	Φ16	Φ25
VA-10	M16X1.5 G3/8	Φ20	Φ38
VA-15	M20X1.5 G1/2	Φ26	Φ38
VA-20	M27X2 G3/4	Φ32	Φ50
VA-25	M48X2 G1	Φ40	Φ50
VA-32	M33X2 G1-1/4	Φ48	Φ88
VA-40	M42X2 G1-1/2	Φ54	Φ88
VA-50	M60X2 G2	Φ70	Φ115

Model	S	L	α	α1	H
VA-06	24	64	10	6	1.4 ⁰ _{-0.1}
VA-08	24	64	12	6	1.4 ⁰ _{-0.1}
VA-10	36	86	14	8	1.8 ⁰ _{-0.1}
VA-15	36	86	14	8	1.8 ⁰ _{-0.1}
VA-20	46	112	21	10	1.8 ⁰ _{-0.1}
VA-25	46	112	23	10	2.7 ⁰ _{-0.12}
VA-32	75	161	25	18	2.7 ⁰ _{-0.12}
VA-40	75	161	26	18	2.7 ⁰ _{-0.12}
VA-50	90	200	26	26	4.5 ⁰ _{-0.18}

Product Description

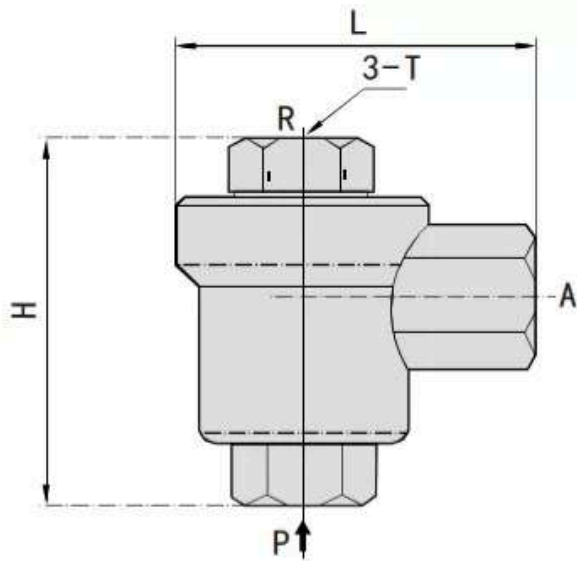
Ordering Code VKP Series Quick Exhausting Valve



Product Specifications

Model	VKP-06	VKP-08	VKP-10	VKP-15
Working Medium	Clean air(40µm Filtration)			
Acting type	External lead			
Working Pressure	0.15 to 1.0Mpa			
MAX. Pressure	1.2Mpa			
Working Temperature	0 to 60°C			
Joint Size	G1/8"	G1/4"	G3/8"	G3/4"

Main Dimensions



Model	T	H	L
VKP-06	G1/8"	39	32
VKP-08	G1/4"	42.5	37.5
VKP-10	G3/8"	50	45
VKP-15	G1/2"	65.5	54