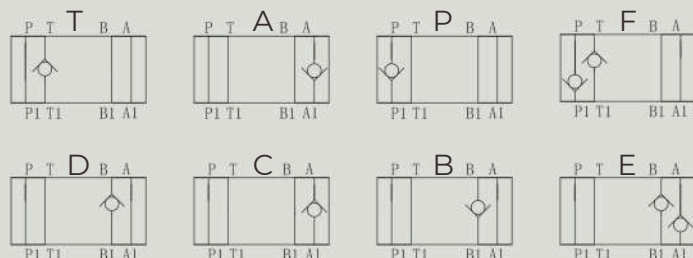


Z1DS10型叠加式单向阀 Z1DS10 SERIES MODULAR CHECK VALVES

符号 SYMBOL



Z1DS 型单向阀是叠加式结构的单向阀。Z1DS series are direct operated check valves.

▶ 技术参数 Technical data

通径 Size	10
工作压力(Mpa) Operating pressure(Mpa)	31.5
流量(L/min) Flow rate(L/min)	100
油温温度(°C) Oil temperature range (°C)	-20~ 70
重量(千克) Weight(KGS)	2.3
阀体 (材料) 表面处理 Valve body (Material) Surface treatment	铸件 表面磷化处理 casting phosphating surface
油液清洁度/Oil cleanliness	NAS1638 9级和ISO440620/18/15 级 NAS1638 class 9 and ISO4406 class 20/18/15

Z1DS 10 * 1 30 * *

型号 Model

通径:10 Size:10

油口液流形式见符号图

See the symbol for flow type

开启压力 Cracking
pressure 1=
0.05MPa 2=
0.3MPa 3= 0.5MPa

附加说明

For further details

无 = 丁腈橡胶 V = 氟橡胶

No code=NBR seals

V=FPM seals

系列号

Series number

Z1DS10外形尺寸和安装 Z1DS10 Size and Fittings

