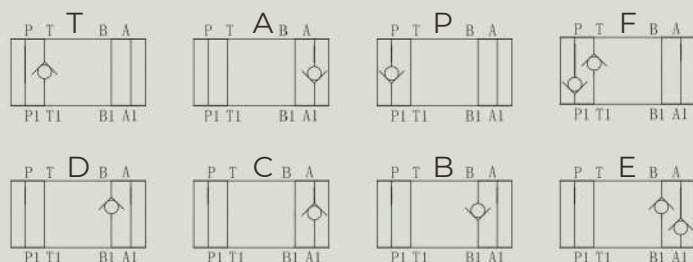


Z1DS6型叠加式单向阀

Z1DS6 SERIES MODULAR CHECK VALVES

符号 SYMBOL



Z1DS 型单向阀是叠加式结构的单向阀。 Z1DS series are direct operated check valves.

▶ 技术参数 Technical data

口径 Size	6
工作压力(Mpa) Operating pressure(Mpa)	31.5
流量(L/min) Flow rate(L/min)	40
油温温度(°C) Oil temperature range (°C)	-20 ~ 70
重量(千克) Weight(KGS)	0.9
阀体 (材料) 表面处理 Valve body (Material) Surface treatment	铸件 表面磷化处理 casting phosphating surface
油液清洁度/Oil cleanliness	NAS1638 9级和ISO440620/18/15级 NAS1638 class 9 and ISO4406 class 20/18/15

Z1DS 6 * 1 | 30 * *

型号 Model

口径: 6 Size: 6

油口液流形式见符号图
See the symbol for flow type

开启压力 Cracking pressure
1= 0.05MPa
2= 0.1MPa
3= 0.3MPa

附加说明

For further details
无 = 丁腈橡胶 V = 氟橡胶
No code = NBR seals
V = FPM seals

系列号
Series number

▶ Z1DS6外形尺寸和安装 1DS6 Overall and Fittings

