



CJPB10-15

订购码 Ordering Code

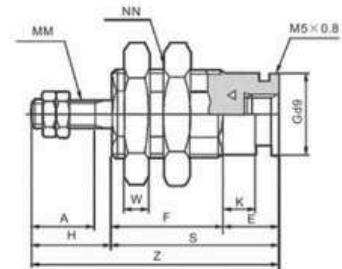
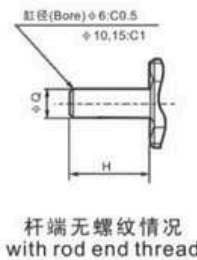
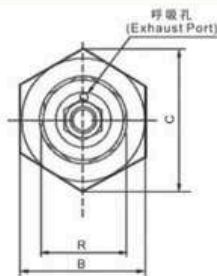
CJP	—	10	—	5	—	B
系列代号 CJPB:面板安装型 CJPS:内藏型 Series Code CJPB:Panel mount Type CJPS:Invisible Type		缸径 Cylinder Bore 6-φ6mm 10-φ10mm 15-φ15mm		行程 Stroke 0-30mm		螺纹型 空白:有螺纹 B:无螺纹 Thread Type Blank:With Thread B:No. Thread

规格 Specification

内径/Bore(mm)	6	10	15
工作介质/Working Medium	空气/Air		
动作型式/Motion Pattern	复动/单动(弹簧压回) Double action / Single Action(Drawing-in Type)		
保证耐压力/Ensured Pressure Resistance	10.5kgf/cm ² (1.05Mpa)		
最高使用压力/Max.pressure	7kgf/cm ² (0.7Mpa)		
最低使用压力/Min.pressure	2kgf/cm ² (0.2Mpa)	1.5kgf/cm ² (0.15Mpa)	
使用温度范围℃/Operating Temperature Range	5~+60℃		
缓冲/Buffering	无/NO		
Margin of Stroke Error(mm)	+1.0 0		
接管口径/Port size	M5×0.8(面板安装型/Panel mount Type)		

外形尺寸 Overall Dimensions

Panel Mounting Style
面板安装型CJPB

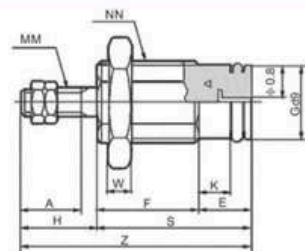
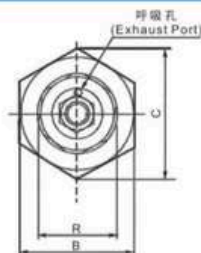


St=行程(Stroke) mm

缸径/ Bore(mm)	A	B	C	E	F			φG	H	K	MM	NN	R	S			W	Z			Q
					5st	10st	15st							5st	10st	15st		5st	10st	15st	
6	7	12	13.9	6	12.5	19.5	26.5	8.5	9	3.5	M3×0.5	M10×1.0	9	18.5	22.5	32.5	3	27.5	34.5	41.5	3
10	10	19	22	6	14.5	21	28	12	12	3.5	M4×0.7	M15×1.5	13	20.5	27	34	4	32.5	39	46	5
15	12	27	31	7	16.5	22.5	29	19	14	4.2	M5×0.8	M22×1.5	20	23.5	29.5	36	5	37.5	43.5	50	6

外形尺寸 Overall Dimensions

内藏型
(Plug Mounting Style)CJPS



缸径/ Bore(mm)	A	B	C	E	F			φG	H	K	MM	NN	R	S			W	Z			Q
					5st	10st	15st							5st	10st	15st		5st	10st	15st	
6	7	12	13.9	6	12.5	19.5	26.5	8.5	9	3.5	M3×0.5	M10×1.0	9	18.5	22.5	32.5	3	27.5	34.5	41.5	3
10	10	19	22	6	14.5	21	28	12	12	3.5	M4×0.7	M15×1.5	13	20.5	27	34	4	32.5	39	46	5
15	12	27	31	7	16.5	22.5	29	19	14	4.2	M5×0.8	M22×1.5	20	23.5	29.5	36	5	37.5	43.5	50	6



TN 16 x 20

订购码 Ordering Code

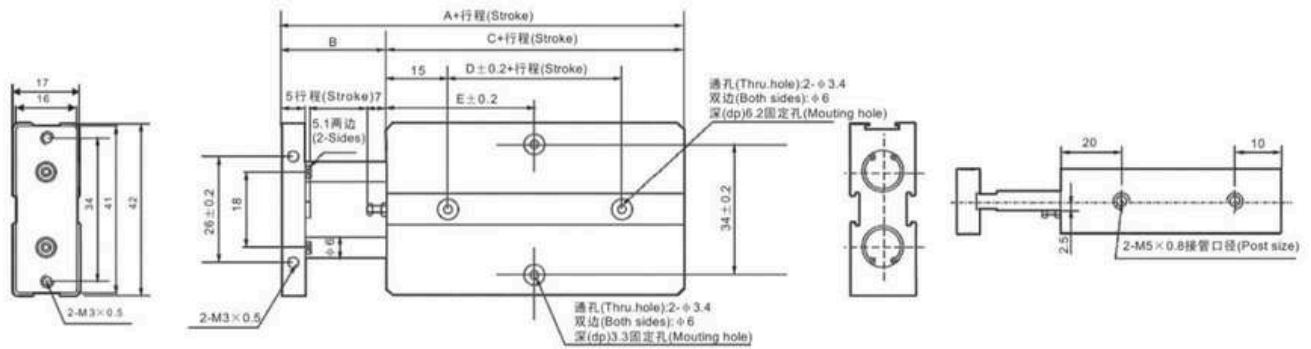
TN	—	20	×	50	—	S
系列代号 双轴复动型 Series Code Double-Shaft Double Action Type		缸径 Cylinder Bore φ 10~φ 32mm		行程 Stroke		磁系代号 空白:标准型 S:内置磁环型 Magnet Code Blank:Without Magnet S:Attach Magnet

规格 Specification

内径/Bore(mm)	10	16	20	25	32
动作型式/Motion Pattern	复动型/Double action				
工作介质/Working Medium	空气/Air				
使用压力范围/Operating Voltage Range	1~9kgf/cm ²				
保证耐压力/Ensured Pressure Resistance	10.5kgf/cm ²				
使用温度范围℃/Operating Temperature Range	-5~+70℃				
使用速度范围/Operating Speed Range	100~500mm/s				
调差行程/Adjustable Stroke	-10~0mm				
缓冲型式/Cushion Type	可调缓冲/Adjustable Cushion				
不回转精度/Non-rotating Precision	0.4℃			0.3℃	
接管口径/Port Size	M5×0.8				G1/8"

外形尺寸 Overall Dimensions

φ 10 TN 系列 /Series

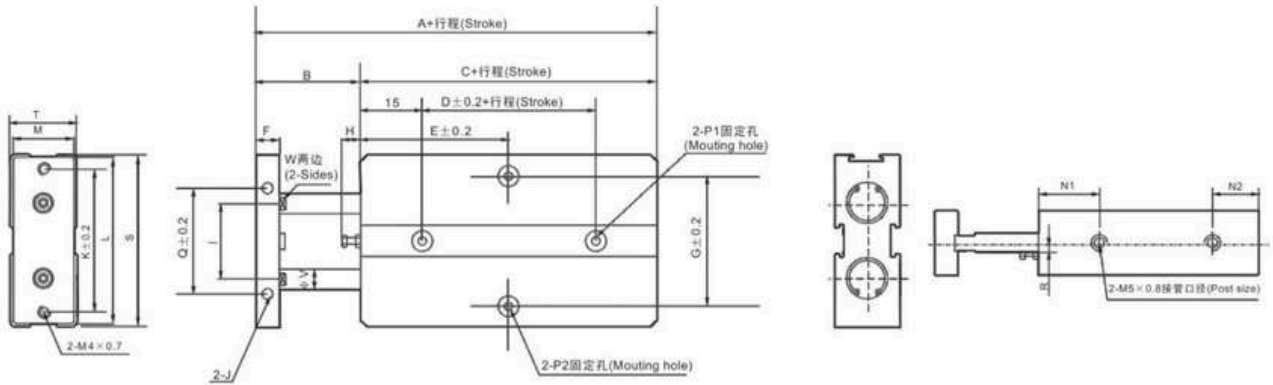


尺寸表 Dimension Sheet

缸径/ Bore size 项目/Item	A	B	C	D	E						
					10	20	30	40	50	60	70
10	63	12	51	10	30	30	35	40	45	50	55

外形尺寸 Overall Dimensions

φ 16~φ 25 TN 系列 /Series





CXSW 15-20

订购码 Ordering Code

CXS W L 20 100 - Y7BW S

Number of auto switches

Nil	2 pcs.	S	1 pc.	n	"n" PCS.
-----	--------	---	-------	---	----------

Auto switch

Nil	Without auto switch (Built-in magnet)
-----	---------------------------------------

* Lead wire length symbols: 0.5m.....Nil (Example) Y59A
3m.....L (Example) Y59AL
5m.....Z (Example) Y59AZ

Standard stroke

* Refer to "Standard stroke" below.

Bore size

6	6mm	10	10mm	15	15mm
20	20mm	25	25mm	32	32mm

Bearing type

M	Slide bearing
L	Ball bushing bearing

Double rod type

规格 Specification

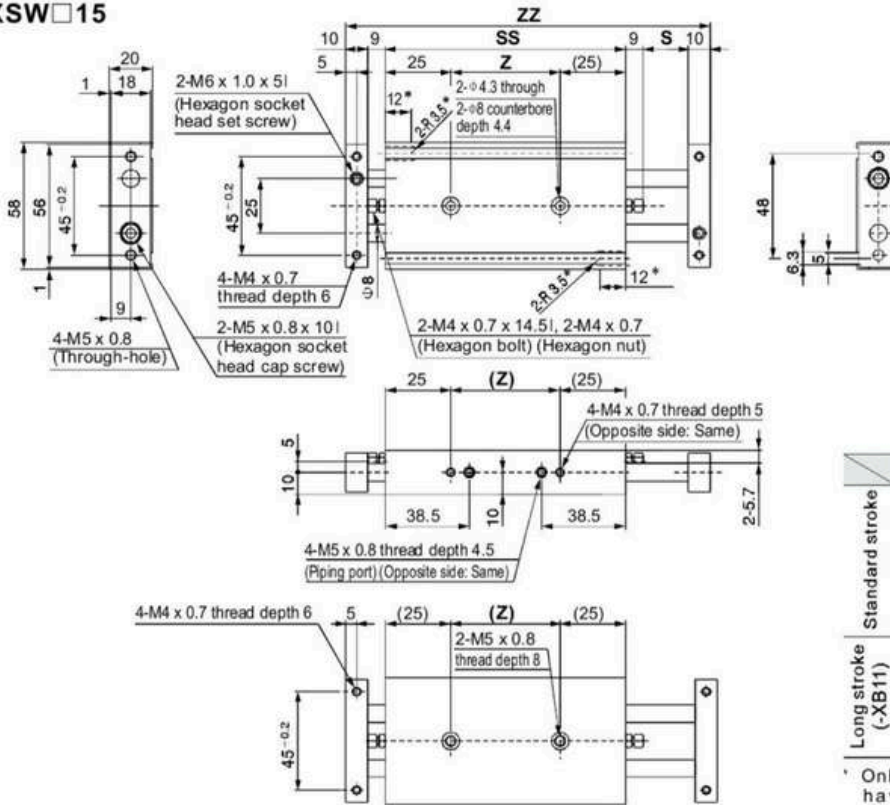
Bore size	6mm	10mm	15mm	20mm	25mm	32mm
Fluid	Air (Non-lube)					
Proof pressure	1.05 MPa					
Max. operating pressure	0.7 Mpa					
Min. operating pressure	0.15Mpa		0.1Mpa			
Ambient and fluid temperature	-10~60°C (No freezing)					
Piston speed	50~500 mm/s					
Cushion	Bumper is standard on both ends					
Stroke length tolerance	0 to -10 mm compared to the standard stroke (Extended end: 5 mm, Retracted end: 5 mm)					
Port size	M5×0.8			Rc 1/8		
Bearing type	Slide bearing, Ball bushing bearing (Same dimensions for both)					

Standard Stroke

Model	Standard stroke(mm)	Long stroke
CXSW□6	10, 20, 30, 40, 50	-
CXSW□10	10, 20, 30, 40, 50, 75, 100	125, 150, 175, 200
CXSW□15		
CXSW□20	10, 20, 30, 40, 50	75, 100, 125, 150
CXSW□25		
CXWS□32		

外形尺寸 Overall Dimensions

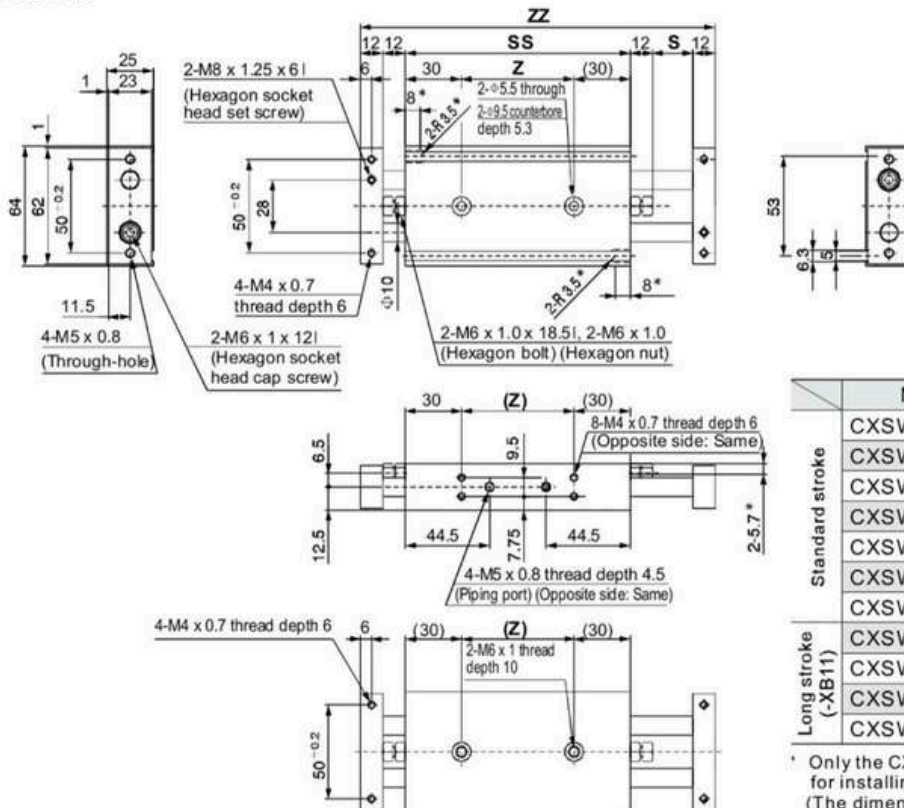
CXSW□15



		(mm)				
		Model	S	SS	ZZ	Z
Standard stroke	CXSW□15-10	10	105	153	55	
	CXSW□15-20	20	115	173	65	
	CXSW□15-30	30	125	193	75	
	CXSW□15-40	40	135	213	85	
	CXSW□15-50	50	145	233	95	
Long stroke (-XB11)	CXSW□15-75	75	170	283	120	
	CXSW□15-100	100	195	333	145	
	CXSW□15-125	125	220	383	170	
	CXSW□15-150	150	245	433	195	

* Only the CXSW□15-10 and the CXSW□15-20 have a groove cut out for installing auto switches.
 (The dimensions are marked "**")

CXSW□20

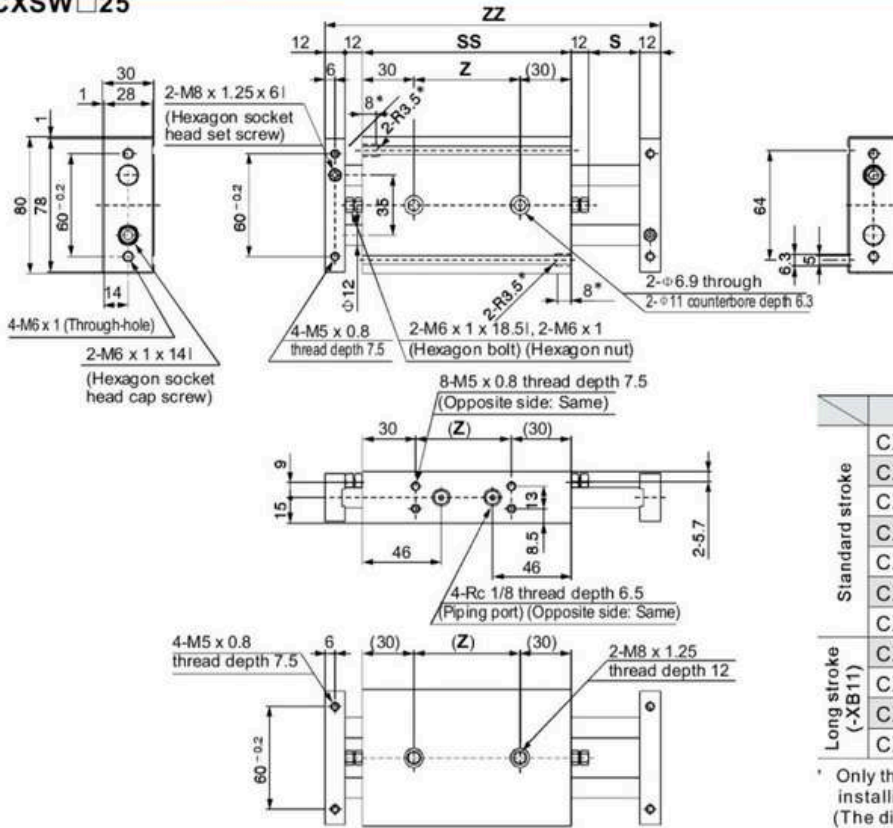


		(mm)				
		Model	S	SS	ZZ	Z
Standard stroke	CXSW□20-10	10	120	178	60	
	CXSW□20-20	20	130	198	70	
	CXSW□20-30	30	140	218	80	
	CXSW□20-40	40	150	238	90	
	CXSW□20-50	50	160	258	100	
Long stroke (-XB11)	CXSW□20-75	75	185	308	125	
	CXSW□20-100	100	210	358	150	
	CXSW□20-125	125	235	408	175	
	CXSW□20-150	150	260	458	200	
	CXSW□20-175	175	285	508	225	
CXSW□20-200	200	310	558	250		

* Only the CXSW□20-10 has a groove cut out for installing auto switches.
 (The dimensions are marked "**")

外形尺寸 Overall Dimensions

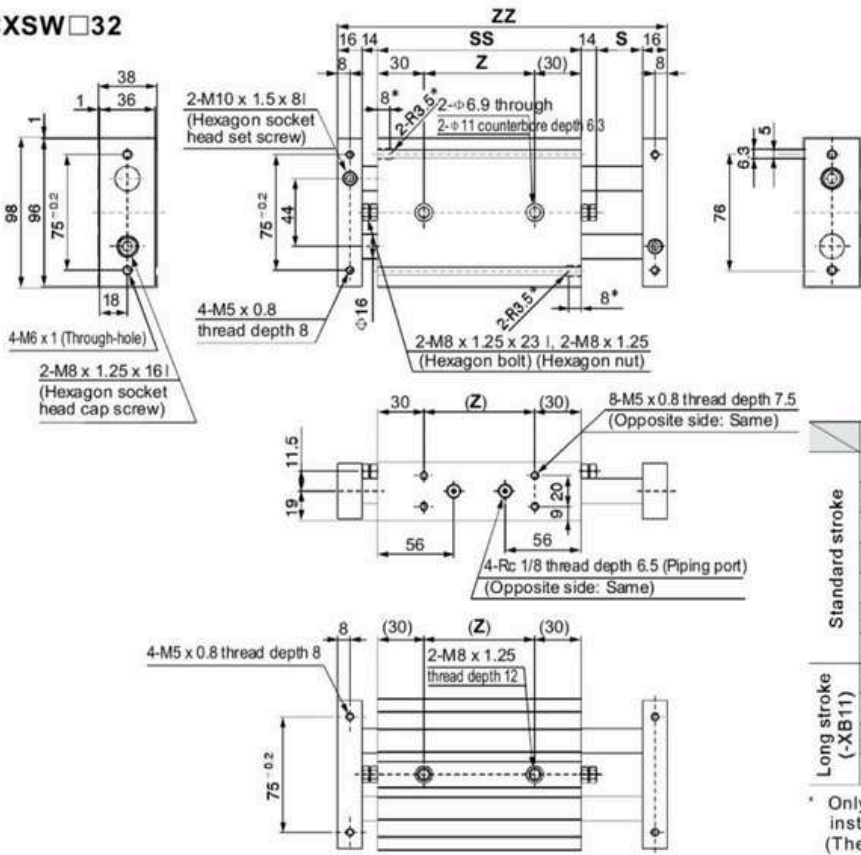
CXSW □25



	Model	S	SS	ZZ	Z
Standard stroke	CXSW □25-10	10	122	62	180
	CXSW □25-20	20	132	72	200
	CXSW □25-30	30	142	82	220
	CXSW □25-40	40	152	92	240
	CXSW □25-50	50	162	102	260
	CXSW □25-75	75	187	127	310
Long stroke (-XB11)	CXSW □25-100	100	212	152	360
	CXSW □25-125	125	237	177	410
	CXSW □25-150	150	262	202	460
	CXSW □25-175	175	287	227	510
	CXSW □25-200	200	312	252	560

* Only the CXSW □25-10 has a groove cut out for installing auto switches. (The dimensions are marked "**")

CXSW □32



	Model	S	SS	ZZ	Z
Standard stroke	CXSW □32-10	10	143	213	83
	CXSW □32-20	20	153	233	93
	CXSW □32-30	30	163	253	103
	CXSW □32-40	40	173	273	113
	CXSW □32-50	50	183	293	123
	CXSW □32-75	75	208	343	148
Long stroke (-XB11)	CXSW □32-100	100	233	393	173
	CXSW □32-125	125	258	443	198
	CXSW □32-150	150	283	493	223
	CXSW □32-175	175	308	543	248
	CXSW □32-200	200	333	593	273

* Only the CXSW □32-10 has a groove cut out for installing auto switches. (The dimensions are marked "**")