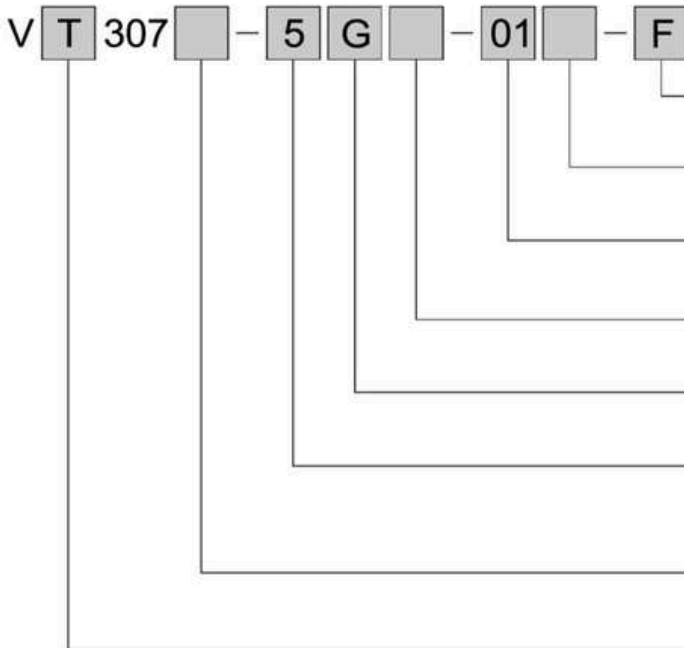


◆ **How to Order**



**Option**

F	With foot bracket
---	-------------------

**Thread type**

Nil	Rc
-----	----

**Port size**

01	1/8	02	1/4
----	-----	----	-----

**Light/Surge voltage suppressor**

Nil	None
-----	------

**Electrical entry**

G	Grommet, 300 mm lead wire	H	Grommet, 600 mm lead wire
---	---------------------------	---	---------------------------

**Rated voltage**

3	110VAC, 50/60Hz	5	24VDC
4	220VAC, 50/60Hz	6	12VDC

**Valve option**

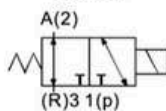
Nil	Standard type
-----	---------------

**Body type**

T	Body ported
---	-------------



Symbol



◆ **Specifications**

Type of actuation	Direct operated type 2 position single solenoid
Fluid	Air
Operating pressure range	0~0.9MPa
Ambient and fluid temperature	-10~50 °C (No freezing)
Response time	20 ms or less (at the pressure of 0.5MPa)
Max. operating frequency	10Hz
Lubrication	Not required (Use turbine oil Class 1 ISO VG32, if lubricated.)
Manual override	Non-locking push type
Mounting orientation	Unrestricted
Shock/Vibration resistance	150/50 (m/s <sup>2</sup> )
Enclosure	Dustproof

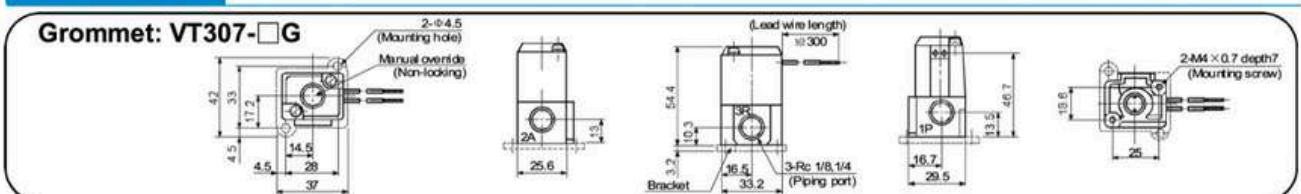
◆ **Solenoid Specifications**

Electrical entry	Grommet		
Coil rated voltage(V)	AC(50/60Hz)	110,220	
	DC	24,12	
Allowable voltage fluctuation	-15~+10% of rated voltage		
Apparent power	AC	Inrush	12.7VA (50Hz) 10.7VA (60Hz)
		Holding	7.6VA (50Hz) 5.4VA (60Hz)
Power consumption	DC	Without indicator light: 4.8W	

◆ **Flow Characteristics/Weight**

Valve model	Port size	Flow characteristics												Weight
		1→2(P→A)			2→3(A→R)			3→2(R→A)			2→1(A→P)			
		C[dm <sup>3</sup> /(sbar)]	b	Cv	C[dm <sup>3</sup> /(sbar)]	b	Cv	C[dm <sup>3</sup> /(sbar)]	b	Cv	C[dm <sup>3</sup> /(sbar)]	b	Cv	
VT307	1/8	0.71	0.35	0.18	0.68	0.27	0.17	0.65	0.36	0.17	0.63	0.35	0.17	0.14kg

◆ **Dimensions**



## 3V1 Series Solenoid Valve



**3V1-M5**

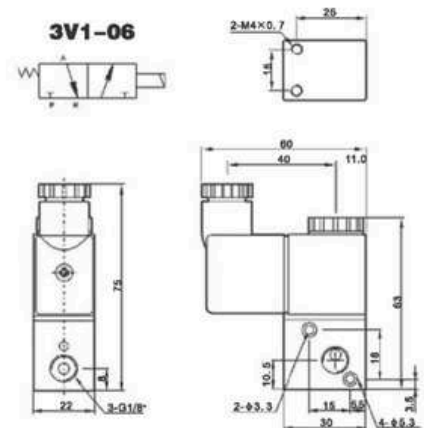
### Ordering Code

<b>3V</b>	<b>1</b>	<b>06</b>	<b>B</b>	<b>AC220V</b>	<b>L</b>
<b>Specification Code</b> 3V: Two-position Three-way Solenoid Valve	<b>Port Size</b> M5:M5×0.8 06:G1/8"	<b>Standard Voltage</b> DC12v DC24v AC24v 50Hz/60Hz AC110v 50Hz/60Hz AC220v 50Hz/60Hz AC380v 50Hz/60Hz	<b>Wiring Form</b> Blank:standard Connector G:Lead Wire Type Oil L:With Lighthing Connector Oil		
<b>Series Code</b> 1:100 Series	<b>Connecting Type</b> Blank:Pipe Connection Type B:Plate Connection Type				

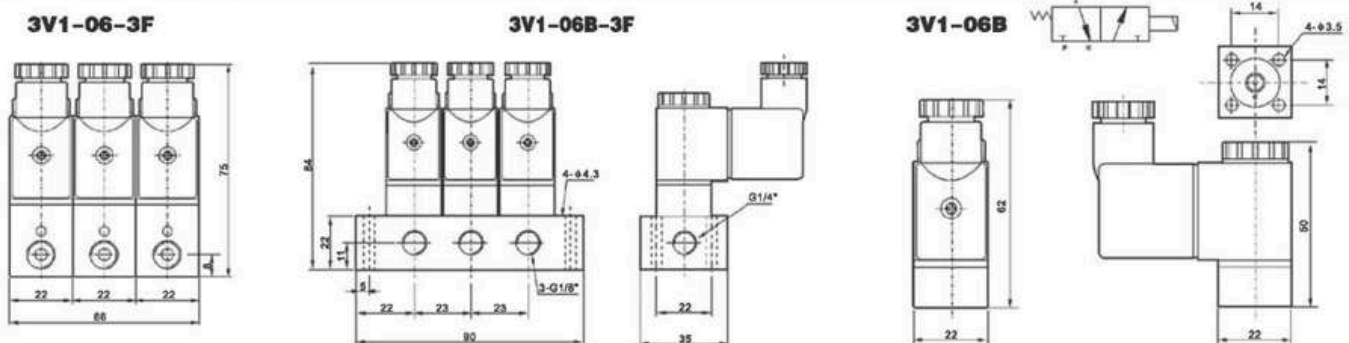
### Specification

Model	3V1-M5	3V1-06
Working Medium	40 Micron Filtered Air	
Motion Pattern	Direct Drive Type	
Joint Pipe Bore	M5	1/8"
Ambient Temperature	-10~+60°C	
Gas Temperature	5~60°C	
Air Outlet Diameter	1.0mm	
Lubrication	Not Necessary	
Working-Pressure	0~0.8MPa	
Max.Pressure Resistance	1.2MPa	
Power Consumption	AC:4.5VA DC:3.0W	
Protect Class	IP65	
Power Connection Form	Gorl	
Material of Body	Aluminum alloy	
Highest Action Frequency	10Cycle / Sec	
Insulation	F Class	
Voltage Range	±10%	
Shortest Excitation Time	0.05 Second	

### Overall Dimensions



### Overall Dimensions



**Base For 4V 4M SY Valve**

◆ **How to order**



100M - 7 F

**Number**

100M	1-12	200M	1-12
300M	1-12	400M	1-5

**Manifold type**

100M	100 Series	200M	200 Series
300M	300 Series	400M	400 Series

VF - 7 F

**Number**

VF3130	1-15
--------	------

**Manifold type**

VF3130	VF3000 Series
--------	---------------

SY - 7 F

**Number**

SY3120	1-12	SY5120	1-15
SY7120	1-15		

**Manifold type**

SY3120	SY3000 Series	SY5120	SY5000 Series
SY7120	SY7000 Series		

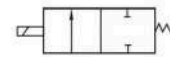
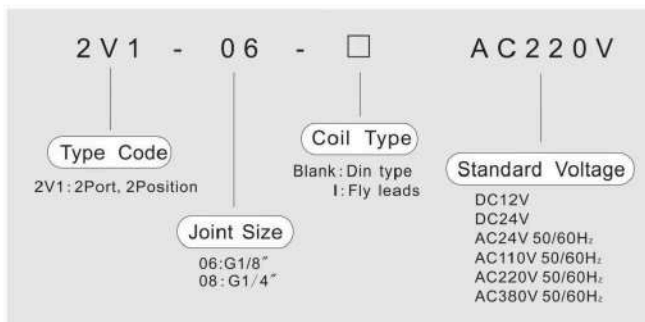
## Product Description

### Product Feature

1. Direct-acting normally closed type with sensitive commutation.
2. No need to add lubrication.
3. Multiple valves can be integrated, saving installation space.
4. Equipped with manual device, easy to install and debug.
5. A variety of standard voltage levels are available for selection.
6. The 2v1 is available in both Din type and lead wire options.

### Symbol

Ordering Code 2V1 Series Solenoid Valve



## Product Specifications

Model	2V1-06	2V1-08
Working medium	Clean air	

Acting type	Direct acting type	
Joint size	1/8"	1/4"
Orifice	2mm	
Working pressure	0 to 1.0Mpa	
Max.pressure	1.5Mpa	
Working Temperature	.-10 to 80°C	
Power	AC220v:5.5va DC24:4.8v	
Insulation Grade	F	
Protective Class	IP65	
Excitation Time	<0.05s	
Seal Material	NBR	

## Main Dimensions

### ■ Main Dimensions

