

4DWHG16型电液换向阀

4DWHG16 SERIES SOLENOID PILOT OPERATED DIRECTIONAL VALVES



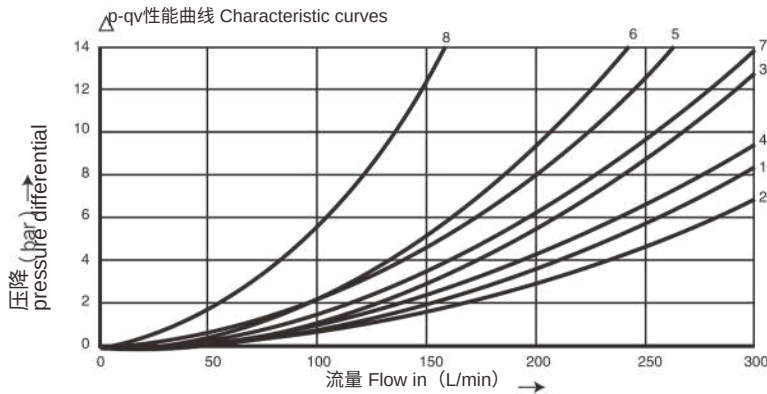
4DWHG16型电液换向阀是用电磁换向阀作为先导控制的滑阀式换向阀，用于控制液流的通断和流动方向。

4DWHG16 series are solenoid pilot operated spool type valves . This series are used to control the start ,stop and direction of flow.

▶ 技术参数 Technical data

通径 Size		16
最高工作压力 P A B(MPa) Max operating pressure P.A.B(MPa)		35
T口(MPa) T Port (MPa)	控制油外排 Externally drained	25
	控制油内排 Internally drained	交流 (AC)-10 直流 (DC)-16
Y口(MPa) Y Port (MPa)	控制油外排 Externally drained	交流 (AC)-10 直流 (DC)-16
最小控制压力 (MPa) Min. Pilot pressure(MPa)		0.45-1.3
最大流量(L/min) Max. flow rate(L/min)		300
重量(千克) Weight(KGS)		9.5
阀体 (材料) 表面处理 Valve body (Material) Surface treatment		铸件 表面磷化处理 casting phosphating surface
油液清洁度/Oil cleanliness		NAS1638 9级和ISO440620/18/15级 NAS1638 class 9 and ISO4406 class 20/18/15

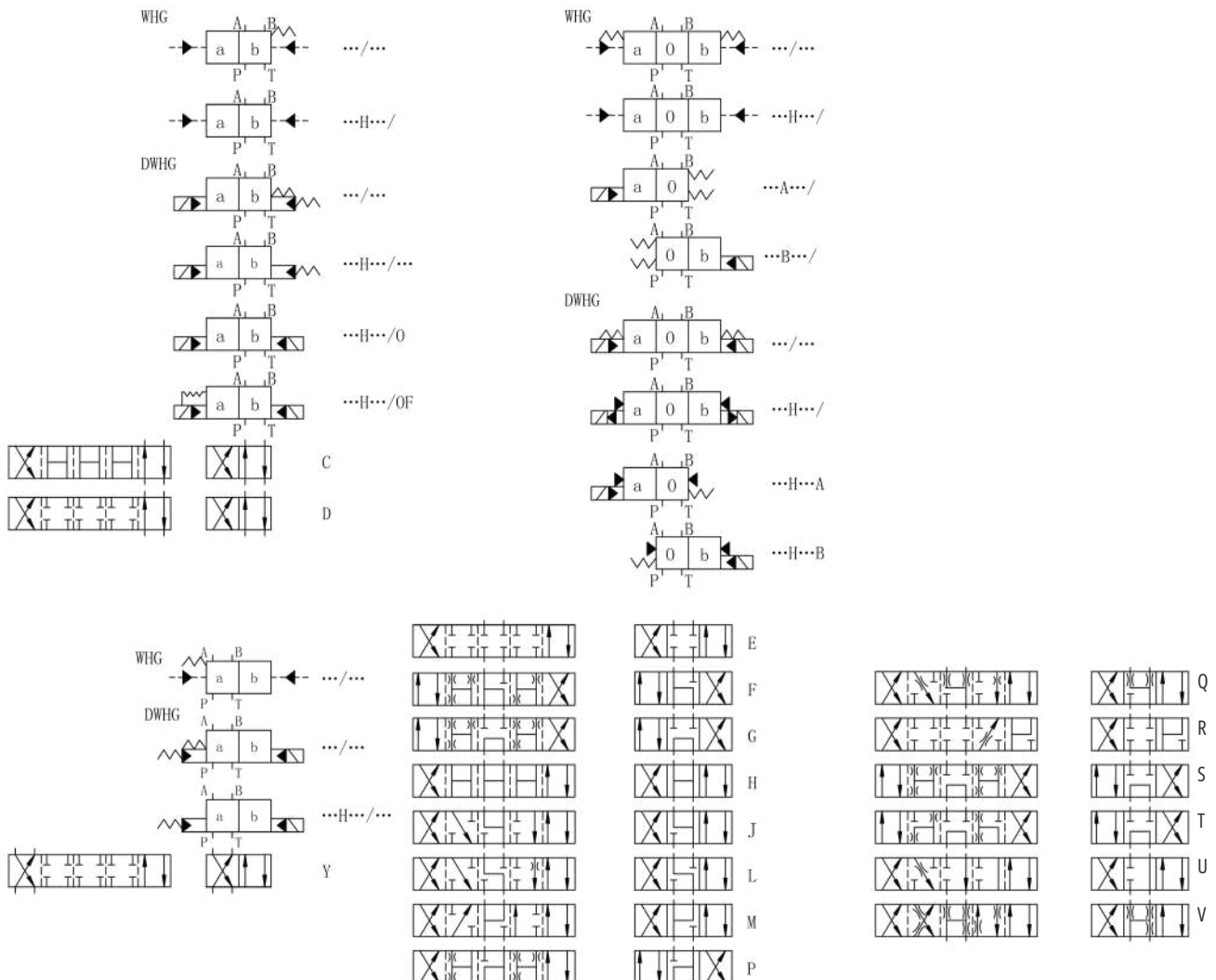
- 特性曲线：4DWHG16...型（在使用 HLP46，油=40°C±5°C时测得）
Characteristic curves: Type4DWHG16... (measured with HLP46, Voil=40°C±5°C)



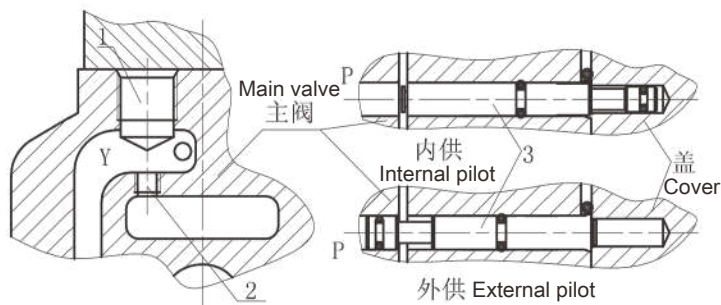
机能符号 Spool Symbol	切换位置 Spool position				
	P-A	P-B	A-T	B-T	P-T
E,D,Y	1	1	1	3	-
F	2	2	3	3	-
G,T	5	1	3	7	6
H,C,Q,V,Z	2	2	3	3	-
J,K,L	1	1	3	3	-

机能符号 Spool Symbol	切换位置 Spool position				
	P-A	P-B	A-T	B-T	P-T
M,W	2	2	4	3	-
R	2	2	4	-	-
U	1	1	4	7	-
S	4	4	4	-	8

机能符号 Spool symbols



控制油内供与外供及内排与外排的说明 Pilot fluid supply



DWHG16 型供排结构图
DWHG16 explanation partial drawing

4DWHG16 型

- 1、内供与外供转换：拆下右盖，将销3的小头朝向主阀内装成外供，将销 3 的小头朝外装成内供。
- 2、内排与外排转换：将主阀顶上螺塞1拆下，装上 M6螺钉2成外排，拆下M6螺钉2成内排。

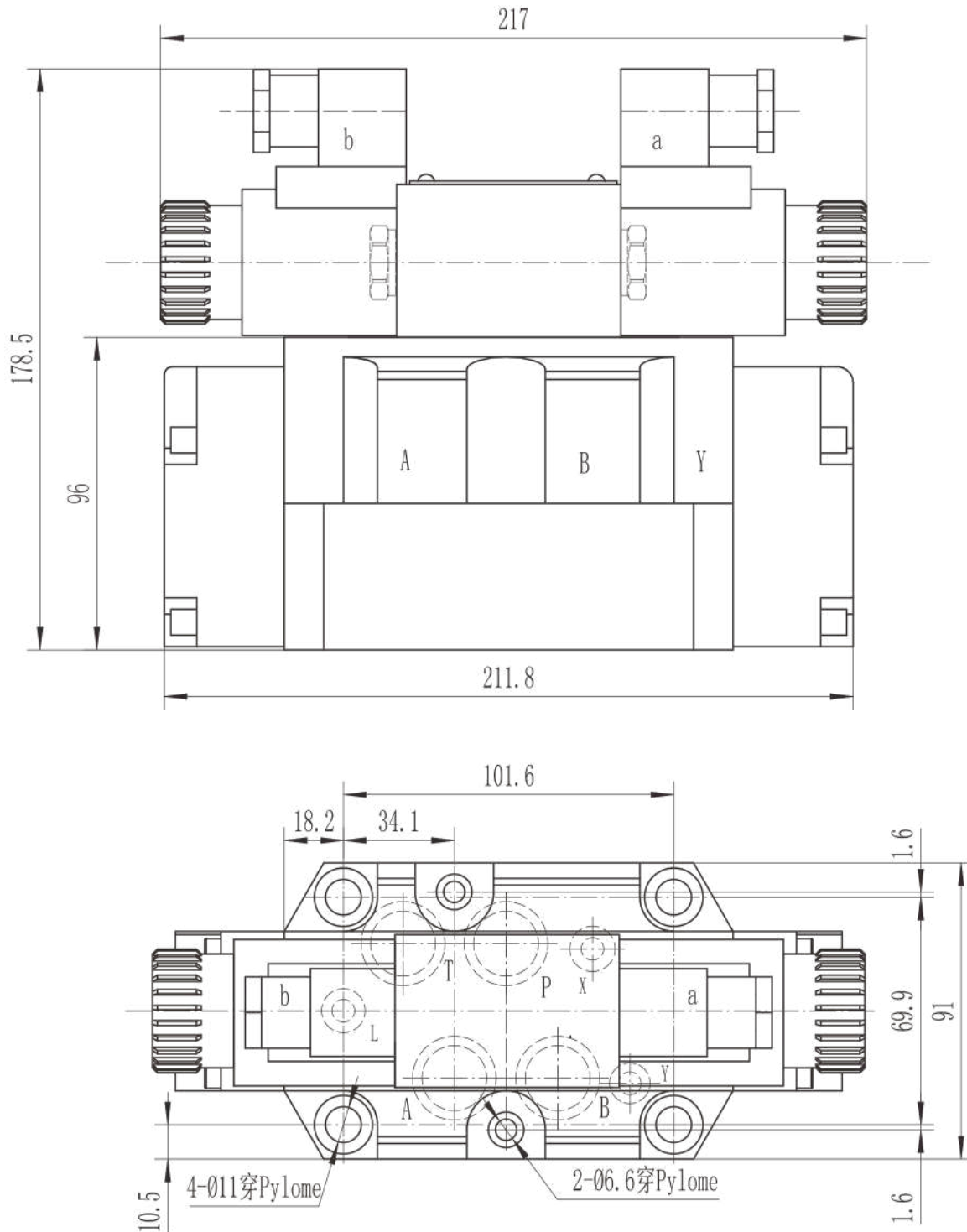
4DWHG16

(1)Internal pilot and external pilot:

Removing the sideward cover, installing the pin to allow "P" port with open position is internal pilot, to convert the pin into "P" port with plugged position is external drain. (2) Internal drain and external drain: Removing the bolt 1 and installing M6 screw 2 is external drain, unscrew the M6 screw 2 is internal

drain.

4DWHG16外型尺寸 4DWHG16 Overall D imensions



阀固定螺钉

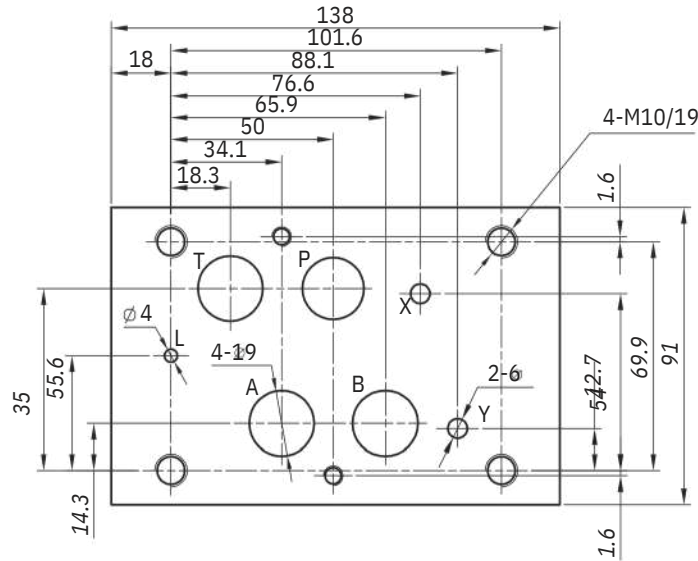
4个M10X60GB/T 70.1-12.9级 拧紧扭矩Ma=75Nm
2个M6X60GB/T 70.1-12.9级 拧紧扭矩Ma=15.5Nm
P.T.A.B口O型圈: ϕ 26X2.4
X.Y.L口O型圈: ϕ 15X1.9

Valve's sets crew

4 of M10x60 GB/T70.1-12.9 Tightening torque Ma=75Nm.
2 of M6x60 GB/T70.1-12.9 Tightening torque Ma=15.5Nm.
O-ring for P.T.A.B Port: ϕ 26x2.4
O-ring for X.Y.L Port: ϕ 15x1.9

☛ 底板安装尺寸 Installation dimensions

4DWHG16



4DWHG16	E	60	/	*	DC24	N	*	/	*	Z5L	*	*	*	*
---------	---	----	---	---	------	---	---	---	---	-----	---	---	---	---

口径 16
Size 16

见滑阀机能符号
See the function symbol
of spool valve
系列 60 = 16-32 口径
Series 60 = Size 16-32

无 = 弹簧复位
O = 导阀无复位弹簧
OF = 导阀无复位弹簧, 带定位器
No code = With spring return
O = Without spring return
OF = Without spring return, with detent
电压 Voltage
DC12; DC24; AC110; AC220

N = 有故障检查按钮

N = With concealed manual override

无 = 外供外排型 E = 内供外排型
ET = 内供内排型 T = 外供内排型
No code = Externally pilot, externally drained
E = Internally pilot, externally drained
ET = Internally pilot internally drained
T = Externally pilot, internally drained

附加说明
For further details
无 = 丁晴橡胶

V = 氟橡胶

Nocod e = NBR seals
V = FPM seals

无标记 = 不带预压阀

P4.5 = 带预压阀; 开启压力 0.45MPa
No code = Without preload valve
P4.5 = With preload valve
cracking pressure is 0.45MPa

无标记 = 不带插入式阻尼器
(电磁换向阀 P 口节流)

B0.8 = 节流孔径 0.8 B 10 = 节流孔径 1.0
B12 = 节流孔径 1.2 B 15 = 节流孔径 1.5
No code if without plug-in throttle

B0.8 = Throttle orifice size 0.8
B10 = Throttle orifice size 1.0
B12 = Throttle orifice size 1.2
B15 = Throttle orifice size 1.5

Z5L = 带灯大 方形插头

ER = 德意志插头

Z5L = Large quadrate plug with light
ER = Deutsch Connector

无 = 没有调节器

S = 有调节器, 进口节流 S 2 = 有调节器, 出口节流
No code = Without pilot adjustment
S = With meter-in pilot adjustment
S2 = With meter-out pilot adjustment