

**订购码 Ordering Code**



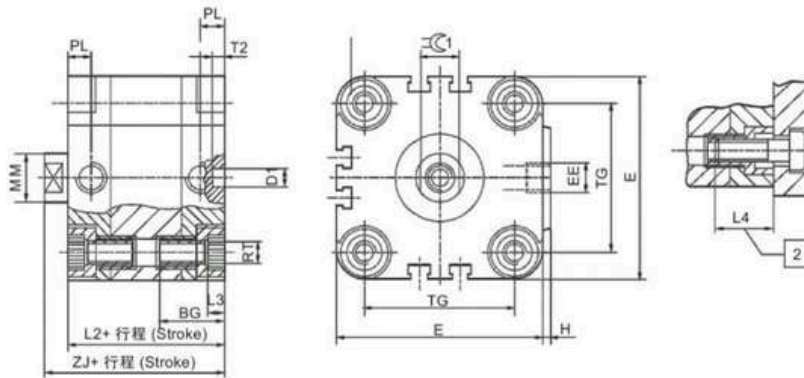
<b>ADVU</b>	—	<b>50</b> × <b>80</b>	—	<b>A</b>	—	<b>P</b>	—	<b>A</b>	—	<b>S2</b>	
<b>型号</b> ADUV:复动 AEVU:单作用推动型 AEVUZ:单作用拉动型 <b>Type</b> ADUV:Double Action Type AEVU:Single-driven type AEVUZ:Single pull type		<b>缸径</b> <b>Cylinder Bore</b> Φ 16-Φ 100mm		<b>行程</b> <b>Stroke</b> 基本型/Normal Type: Φ 16-25:1-200mm Φ 32-63:1-300mm Φ 80-100:1-400mm 单作用/Single Action: Φ 12:1-10mm Φ 16-100:1-25mm		<b>牙型</b> 空白:内螺纹 A:外螺纹 <b>Cog Type</b> Blank:Internal Thread A:External Thread		<b>固定缓冲</b> <b>Buffer Type</b>		<b>磁系代号</b> 空白:不附磁系 <b>Magnet Code</b> Blank:Without Magnet A:Attach Magnet	<b>活塞杆代号</b> 空白:一端活塞杆 S2:双端活塞杆 <b>Plunger Code</b> Blank:Single end connecting rod S2:Both ends connecting rod

**规格 Specification**

内径/Bore(mm)		16	20	25	32	40	50	63	80	100
动作方式/Action		双作用, 单杆/双杆/Double acting, single rod/double rod								
使用流体/Fluid		过滤压缩空气/Filtered compressed air								
保证耐压力/Ensured Pressure Resistance		1.5MPa								
使用压力范围/Operating pressure range	ADVU --P-A	0.12~1.0MPa	0.1~1.0MPa	0.08~1.0MPa			0.06~1.0MPa			
	ADVU --P-A-S2	0.13~1.0MPa	0.12~1.0MPa	0.1~1.0MPa			0.8~1.0MPa			
环境和流体温度/Ambient and fluid temperature		-20~80 (No freezing)								
接管口径/Port size		M5			G1/8"					G1/4"
活塞杆螺纹/ Piston rod thread	内螺纹/Female thread	M4	M5	M6		M8	M10	M12		
	外螺纹/Male thread	M8	M10×1.25			M12×1.25	M16×1.5	M20×1.5		
缓冲/Cushion		橡胶缓冲/Rubber bumper								

**外形尺寸 Overall Dimensions**

**ADVU□-□-P-A 系列 /Series**



- 注:  
从上部安装 φ 12和16mm气缸时, 两个安装螺钉成对角线分布, 或者用非磁性螺钉。  
+=行程长度相加  
2最小旋入深度
- Note  
To attach cylinder. 12 and 16 mm from above, use only 2 screws diagonally or non-magnetic screws.  
+= plus stroke length  
2 Minimum screw-in depth

**尺寸表 Dimension Sheet**

内径/ Bore size(mm)	GB	D1 Φ H9	E	EE	H	L2	L3	L4	Φ MM	PL	RT	T2	TG	ZJ	∠C1
16	18.5	6	29	M5	1	38	3	16	8	8	M4	4	18	42.5	7
20	18.5	6	36	M5	1.5	38	4	18	10	8	M5	4	22	42.5	9
25	18.5	6	40	M5	1.5	39.5	4	18	10	8	M5	4	26	45	9
32	21.5	6	50	G1/8	2	44.5	5	20	12	8	M6	4	32	50.5	10
40	21.5	6	60	G1/8	2.5	45.5	5	20	12	8	M6	4	42	52	10
50	22	6	68	G1/8	3	45.5	6	20	16	8	M8	4	50	53	13
63	24.5	8	87	G1/8	4	50	8	25	16	8	M10	4	62	57.5	13
80	27.5	8	107	G1/8	4	56	8	25	20	8.5	M10	4	82	64	17
100	32.5	8	128	G1/4	5	66.5	8	25	35	10.5	M10	4	103	76.5	22



**SDA 40 x 15**



**SSA 32-40**



**SDAJ40**

**订购码 Ordering Code**

**SDA**

系列代号  
SDA:复动型  
SSA:单动伸出型  
STA:单动引入型  
SDAD:双轴复动型  
SDAJ:复动可调行程型

**Series Code**  
SDA: Double Action Type  
SSA: Single Action Extrusion Type  
STA: Single Action Drawing-in Type  
SDAD: Double-shaft Double Action Type  
SDAJ: Double-shaft and Adjustable Stroke Type

**20**

缸径  
**Cylinder Bore**  
12mm~100mm

**30**

行程  
**Stroke**

**5**

可调行程  
**Adjust Stroke**  
5mm  
15mm  
25mm

**S**

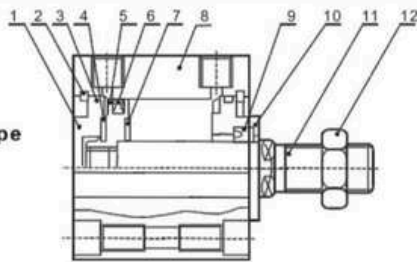
磁石代号  
空白:标准型  
S:内置磁环  
**Magnet Code**  
Blank:Without Magnet  
S:Attach Magnet

**B**

牙型  
空白:内牙  
B:外牙  
N:无牙  
**Cog Type**  
Blank:Inner Thread  
B:outer Thread  
N:no Thread

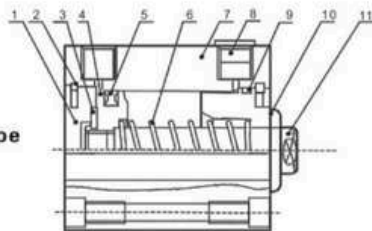
**内部结构 Internal structure**

**SDA 型/Type**



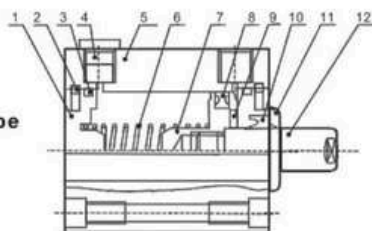
序号 NO.	名称 Designation	序号 NO.	名称 Designation
1	后盖/Back cover	2	C型扣环/Type C buckle ring
3	前后盖O令/O-ring	4	防撞垫片/Anti-crash cushion
5	活塞/Piston	6	活塞O令/Piston O-ring
7	防撞垫片/Anti-crash cushion	8	缸筒/Barrel
9	前盖密封圈/Front cover seal ring	10	前盖/Front cover
11	活塞杆/Piston rod	12	活塞杆螺母/Piston Rod Nut

**SSA 型/Type**



序号 NO.	名称 Designation	序号 NO.	名称 Designation
1	后盖/Back cover	2	C型扣环/Type C buckle ring
3	防撞垫片/Anti-crash cushion	4	活塞/Piston
5	活塞O令/Piston O-ring	6	压缩弹簧 /Compressed spring
7	缸筒/Barrel	8	消音器/Silencer
9	前后盖O令/Cover O-ring	10	前盖/Front cover
11	活塞杆/Piston rod		

**STA 型/Type**



序号 NO.	名称 Designation	序号 NO.	名称 Designation
1	后盖/Back cover	2	C型扣环/Type C buckle ring
3	前后盖O令/Cover O-ring	4	消音器/Silencer
5	缸筒/Barrel	6	压缩弹簧 /Compressed spring
7	活塞/Piston	8	活塞O令/Piston O-ring
9	防撞垫片/Anti-crash cushion	10	前盖密封圈/Front cover seal ring
11	前盖/Front cover	12	活塞杆/Piston rod

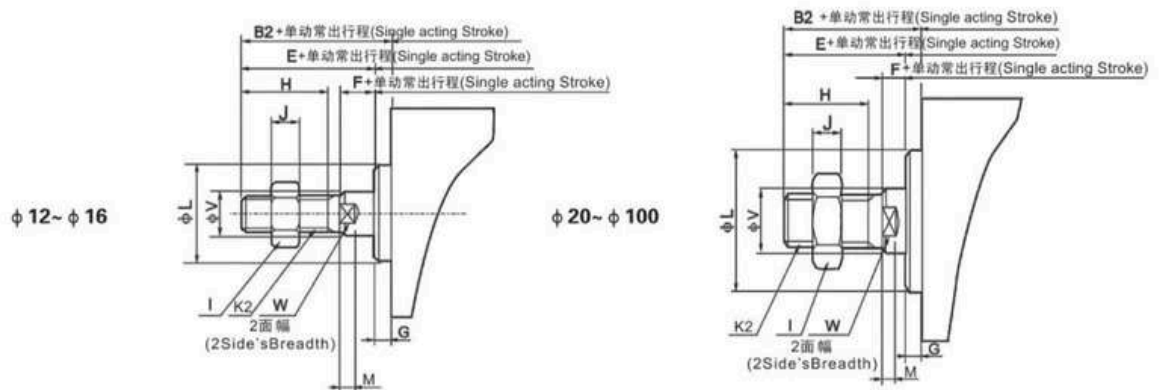
**规格 Specification**

内径/Bore(mm)		12	16	20	25	32	40	50	63	80	100		
动作形式/Motion Pattern		复动型 / Double Acting											
		单动伸出型 单动引入型/Single Action Extrusion type					Single Action Drawing-in Type						
工作介质/Working Medium		空气/Air											
使用压力范围/ Operating Pressure Range		复动型/Double Action 单动型/Single Action					0.1~0.9MPa						
保证耐压力/Ensured Pressure Resistance		1.35MPa											
使用温度范围/Operating Temperature Range		-5~70℃											
使用速度范围/ Operating Speed Range		复动型/Double Action 单动型/Single Action					30~500mm/s			30~350mm/s		30~250mm/s	
缓冲型式/Buffer Type		固定缓冲/Fixed Type Buffer											
接管口径/Port Size		M5×0.8					G1/8"		G1/4"		G3/8"		

**行程 Stroke**

内径/Bore(mm)		12	16	20	25	32	40	50	63	80	100
复动型/ Double Action	不附磁/ Not attach magnet	5~60 mm 每5mm一级 is grouped as one grade	5~85 mm 每5mm一级 is grouped as one grade	5~90 mm 每5mm一级 is grouped as one grade	100~110mm 每5mm一级 is grouped as one grade	5~90 mm 每5mm一级 is grouped as one grade	5~90 mm 每5mm一级 is grouped as one grade	100~130mm 每5mm一级 is grouped as one grade			
	附磁型/ Attach magnet	5~50 mm 每5mm一级 is grouped as one grade	5~75mm 每5mm一级 is grouped as one grade	5~90 mm 每5mm一级 is grouped as one grade	100mm	5~90 mm 每5mm一级 is grouped as one grade	5~90 mm 每5mm一级 is grouped as one grade	100~120 mm 每5mm一级 is grouped as one grade			
单动型/ Single Action	不附磁/ Not attach magnet		5~30 mm 每5mm一级 is grouped as one grade	5~30 mm 每5mm一级 is grouped as one grade		5~30 mm 每5mm一级 is grouped as one grade					
	附磁型/ Attach magnet		5~30 mm 每5mm一级 is grouped as one grade	5~30 mm 每5mm一级 is grouped as one grade		5~30 mm 每5mm一级 is grouped as one grade					
最大行程/Max.Stroke		60mm	100mm	120mm	130mm						

**外牙尺寸 Outer Thread Dimension**



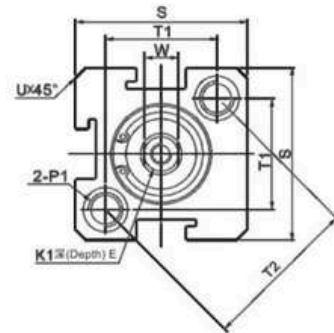
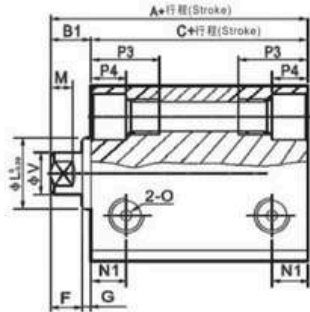
**尺寸表 Dimension Sheet**

缸径/行程 Bore/Stroke	B2	E	F	G	H	I	J	K2	L	M	V	W
12	17	16	4	1	10	8	4	M5×0.8	10.2	2.8	6	5
16	17.5	16	4	1.5	10	8	4	M5×0.8	11	2.8	6	5
20	20.5	19	4	1.5	13	10	5	M6×1.0	16	2.8	8	6
25	23	21	4	2	15	12	6	M8×1.25	17	2.8	10	8
32	25	22	4	3	15	17	6	M10×1.25	22	2.8	12	10
40	35	32	4	3	25	19	8	M14×1.5	28	2.8	16	14
50	37	33	5	4	25	27	11	M18×1.5	38	2.8	20	17
63	37	33	5	4	25	27	11	M18×1.5	40	2.8	20	17
80	44	39	6	5	30	32	13	M22×1.5	45	4	25	22
100	50	45	7	5	35	36	13	M26×1.5	55	4	32	27

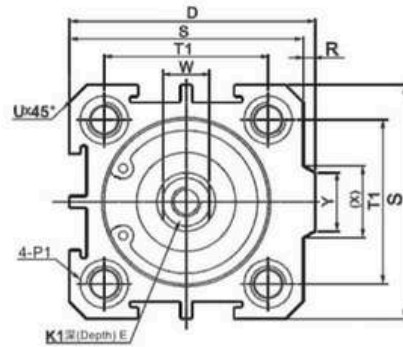
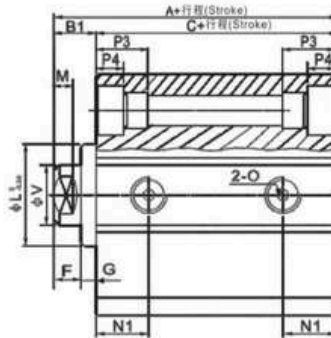


外形尺寸 Overall Dimensions

SDA.SDAS 型Type  
φ 12 - φ 16



SDA.SDAS 型Type  
φ 20 - φ 100

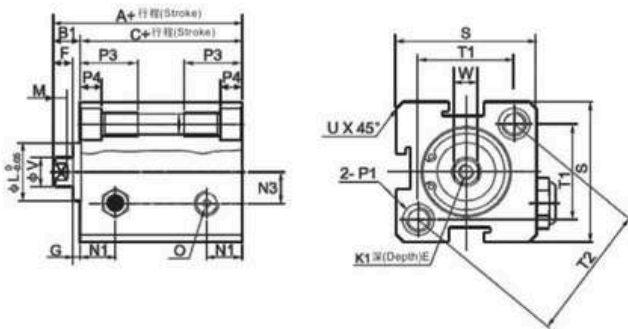


尺寸表 Dimension Sheet

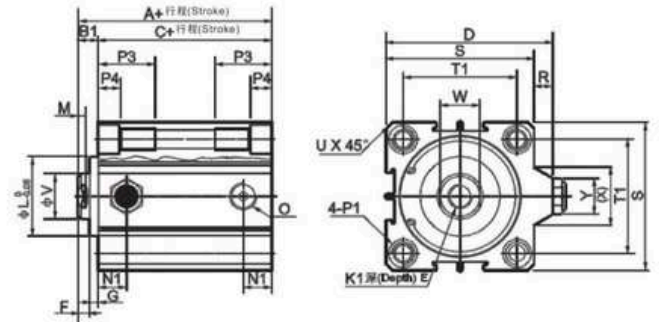
型式/Type Bore Size/Symbol	标准型 Standard type			附磁性 Attach Magnet			D	E		F	G	K1	L	M	N1	
	A	B1	C	A	B1	C		行程 Stroke ≤ 10	行程 Stroke > 10							
12	22	5	17	32	5	27	-	6		4	1	M3×0.5	10.2	2.8	6.3	
16	24	5.5	18.5	34	5.5	28.5	-	6		4	1.5	M3×0.5	11	2.8	7.3	
20	25	5.5	19.5	35	5.5	29.5	36	8		4	1.5	M4×0.7	15	2.8	7.5	
25	27	6	21	37	6	31	42	10		4	2	M5×0.8	17	2.8	8	
32	31.5	7	24.5	41.5	7	34.5	50	12		4	3	M6×1	22	2.8	9	
40	33	7	28	43	7	36	58.5	12		4	3	M8×1.25	28	2.8	10	
50	37	9	28	47	9	38	71.5	15		5	4	M10×1.5	38	2.8	10.5	
63	41	9	32	51	9	42	84.5	15		5	4	M10×1.5	40	2.8	11.8	
80	52	11	41	62	11	51	104	15	20	6	5	M14×1.5	45	4	14.5	
100	63	12	51	73	12	61	124	18	20	7	5	M18×1.5	55	4	20.5	
内径/符号 Bore Size/Symbol	N3	O	P1			P3	P4	R	S	T1	T2	U	V	W	X	Y
12	6	M5×0.8	双边(Double Sides):φ6.5/牙(Thread):M5×0.8/通孔(Through ports):φ4.2			12	4.5	-	25	16.2	23	1.6	6	5	-	-
16	6.5	M5×0.8	双边(Double Sides):φ6.5/牙(Thread):M5×0.8/通孔(Through ports):φ4.2			12	4.5	-	29	19.8	28	1.6	6	5	-	-
20	-	M5×0.8	双边(Double Sides):φ6.5/牙(Thread):M5×0.8/通孔(Through ports):φ4.2			14	4.5	2	34	24	-	2.1	8	6	11.3	10
25	-	M5×0.8	双边(Double Sides):φ8.2/牙(Thread):M6×1.0/通孔(Through ports):φ4.6			15	5.5	2	40	28	-	3.1	10	8	12	10
32	-	G1/8"	双边(Double Sides):φ8.2/牙(Thread):M6×1.0/通孔(Through ports):φ4.6			16	5.5	6	44	34	-	2.15	12	10	18.3	15
40	-	G1/8"	双边(Double Sides):φ10/牙(Thread):M8×1.25/通孔(Through ports):φ6.5			20	7.5	6.5	52	40	-	2.25	16	14	21.3	16
50	-	G1/4"	双边(Double Sides):φ11/牙(Thread):M8×1.25/通孔(Through ports):φ6.5			25	8.5	9.5	62	48	-	4.15	20	17	30	20
63	-	G1/4"	双边(Double Sides):φ11/牙(Thread):M8×1.25/通孔(Through ports):φ6.5			25	8.5	9.5	75	60	-	3.15	20	17	28.7	20
80	-	G3/8"	双边(Double Sides):φ14/牙(Thread):M12×1.75/通孔(Through ports):φ9.2			25	10.5	10	94	74	-	3.65	25	22	36	26
100	-	G3/8"	双边(Double Sides):φ17.5/牙(Thread):M14×2/通孔(Through ports):φ11.3			30	13	10	114	90	-	3.65	32	27	35	26

**外形尺寸 Overall Dimensions**

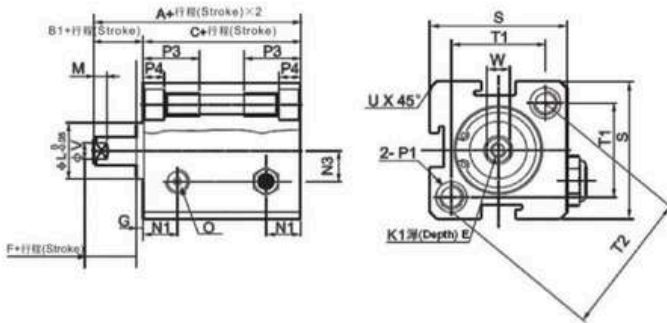
SSA.SSAS 型/Type  $\phi 12-\phi 16$



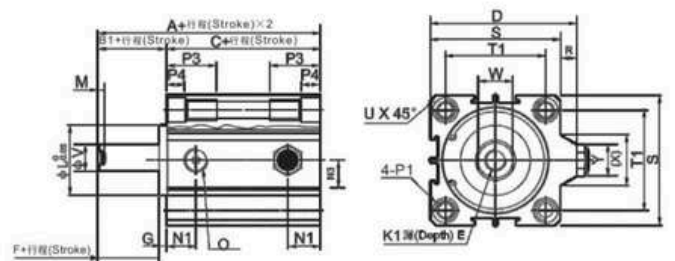
SSA.SSAS 型/Type  $\phi 20-\phi 40$



STA.STAS 型/Type  $\phi 12-\phi 16$



STA.STAS 型/Type  $\phi 20-\phi 40$

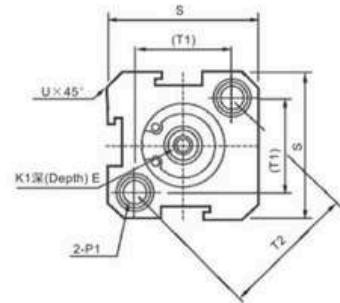
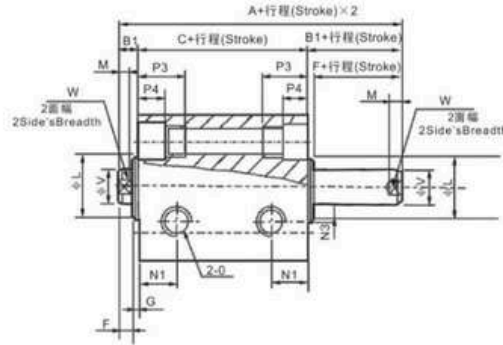


**尺寸表 Dimension Sheet**

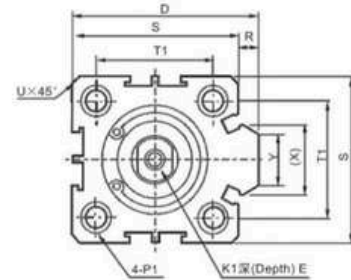
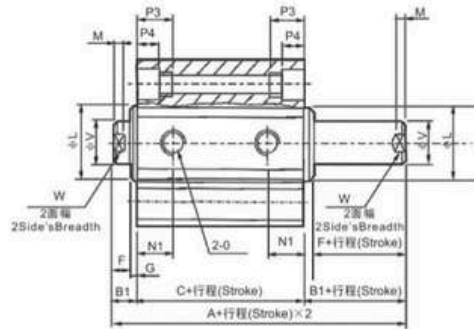
型式/Type	标准型/Standard Type			附磁性/Attach magnet							D	E	F	G	K1	L	M	N1		
	A	B1	C	A	B1	C	A	B1	C											
行程 Stroke	≤10	>10	≤10	>10	≤10	>10	≤10	>10	≤10	>10										
12	32	42	5	27	37	42	52	5	37	47	-	6	4	1	M3×0.5	10.2	2.8	6.3		
16	34	44	5.5	28.5	38.5	44	54	5.5	38.5	48.5	-	6	4	1.5	M3×0.5	11	2.8	7.3		
20	35	45	5.5	29.5	39.5	45	55	5.5	39.5	49.5	36	8	4	1.5	M4×0.7	16	2.8	7.5		
25	37	47	6	34	41	47	57	6	41	51	42	10	4	2	M5×0.8	17	2.8	8		
32	41.5	51.5	7	34.5	44.5	51.5	61.5	7	44.5	54.5	50	12	4	3	M6×1	22	2.8	9		
40	43	53	7	36	46	53	63	7	46	56	58.5	12	4	3	M8×1.25	28	2.8	10		
内径/符号 Bore Size/Symbol	N3	O	P1							P3	P4	R	S	T1	T2	U	V	W	X	Y
12	6	M5×0.8	双边(Double Sides):φ6.5/牙(Thread):M5×0.8/通孔(Through ports):φ4.2							12	4.5	-	25	16.2	23	1.6	6	5	-	-
16	6.5	M5×0.8	双边(Double Sides):φ6.5/牙(Thread):M5×0.8/通孔(Through ports):φ4.2							12	4.5	-	29	19.8	28	1.6	6	5	-	-
20	-	M5×0.8	双边(Double Sides):φ6.5/牙(Thread):M5×0.8/通孔(Through ports):φ4.2							14	4.5	2	34	24	-	2.1	8	6	11.3	10
25	-	M5×0.8	双边(Double Sides):φ8.2/牙(Thread):M6×1.0/通孔(Through ports):φ4.6							15	5.5	2	40	28	-	3.1	10	8	12	10
32	-	G1/8"	双边(Double Sides):φ8.2/牙(Thread):M6×1.0/通孔(Through ports):φ4.6							16	5.5	6	44	34	-	2.15	12	10	18.3	15
40	-	G1/8"	双边(Double Sides):φ10/牙(Thread):M8×1.25/通孔(Through ports):φ6.5							20	7.5	6.5	52	40	-	2.25	16	14	21.3	16

外形尺寸 Overall Dimensions

SDAD.SDADS 型/Type  
φ 12~ φ 16



SDAD.SDADS 型/Type  
φ 20~ φ 100



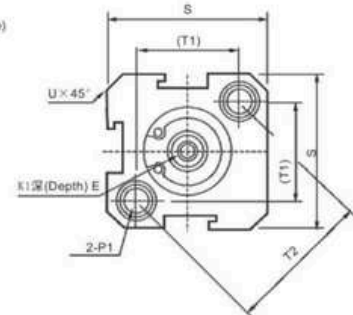
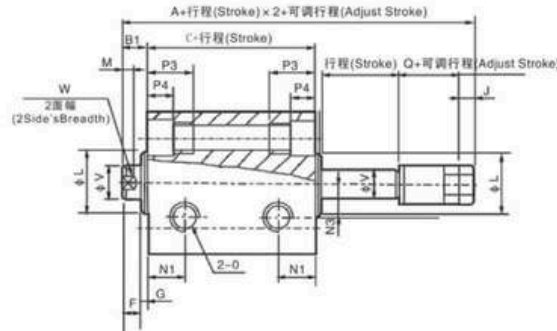
尺寸表 Dimension Sheet

型式/Type Bore Size/Symbol	标准型 Standard type		附磁性 Attach Magnet			D	E		F	G	K1	L	M	N1		
	A	B1	C	A	B1		C	行程 Stroke ≤ 10							行程 Stroke > 10	
12	27	5	17	37	5	27	-	6	4	1	M3×0.5	10.2	2.8	6.3		
16	29.5	5.5	18.5	39.5	5.5	28.5	-	6	4	1.5	M3×0.5	11	2.8	7.3		
20	30.5	5.5	19.5	40.5	5.5	29.5	8行程(Stroke)=5 时为(itis)6.5	10行程(Stroke)=5 时为(itis)7	4	1.5	M4×0.7	15	2.8	7.5		
25	33	6	21	43	6	31	42		4	2	M5×0.8	17	2.8	8		
32	38.5	7	24.5	48.5	7	34.5	50	8	4	3	M6×1	22	2.8	9		
40	40	7	28	50	7	36	58.5	9	4	3	M8×1.25	28	2.8	10		
50	46	9	28	56	9	38	71.5	11	5	4	M10×1.5	38	2.8	10.5		
63	50	9	32	60	9	42	84.5	11	5	4	M10×1.5	40	2.8	11.8		
80	63	11	41	73	11	51	104	14	6	5	M14×1.5	45	4	14.5		
100	75	12	51	85	12	61	124	18	7	5	M18×1.5	55	4	20.5		
内径/符号 Bore Size/Symbol	N3	O	P1			P3	P4	R	S	T1	T2	U	V	W	X	Y
12	6	M5×0.8	双边(Double Sides):φ6.5/牙(Thread):M5×0.8/通孔(Through ports):φ4.2			12	4.5	-	25	16.2	23	1.6	6	5	-	-
16	6.5	M5×0.8	双边(Double Sides):φ6.5/牙(Thread):M5×0.8/通孔(Through ports):4.2			12	4.5	-	29	19.8	28	1.6	6	5	-	-
20	-	M5×0.8	双边(Double Sides):φ6.5/牙(Thread):M5×0.8/通孔(Through ports):φ4.2			14	4.5	2	34	24	-	2.1	8	6	11.3	10
25	-	M5×0.8	双边(Double Sides):φ8.2/牙(Thread):M6×1.0/通孔(Through ports):φ4.6			15	5.5	2	40	28	-	3.1	10	8	12	10
32	-	G1/8"	双边(Double Sides):φ8.2/牙(Thread):M6×1.0/通孔(Through ports):φ4.6			16	5.5	6	44	34	-	2.15	12	10	18.3	15
40	-	G1/8"	双边(Double Sides):φ10/牙(Thread):M8×1.25/通孔(Through ports):φ6.5			20	7.5	6.5	52	40	-	2.25	16	14	21.3	16
50	-	G1/4"	双边(Double Sides):φ11/牙(Thread):M8×1.25/通孔(Through ports):φ6.5			25	8.5	9.5	62	48	-	4.15	20	17	30	20
63	-	G1/4"	双边(Double Sides):φ11/牙(Thread):M8×1.25/通孔(Through ports):φ6.5			25	8.5	9.5	75	60	-	3.15	20	17	28.7	20
80	-	G3/8"	双边(Double Sides):φ14/牙(Thread):M12×1.75/通孔(Through ports):φ9.2			25	10.5	10	94	74	-	3.65	25	22	36	26
100	-	G3/8"	双边(Double Sides):φ17.5/牙(Thread):M14×2/通孔(Through ports):φ11.3			30	13	10	114	90	-	3.65	32	27	35	26

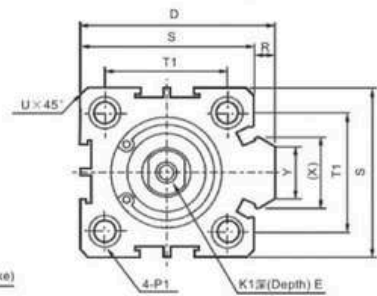
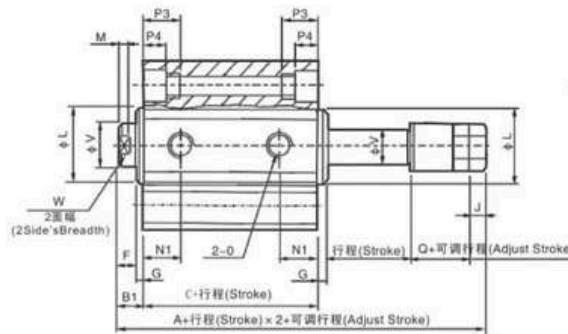


**外形尺寸 Overall Dimensions**

**SDAJ.SDAJS 型/Type**  
**φ 12~φ 16**



**SDAJ.SDAJS 型/Type**  
**φ S20~φ 100**



**尺寸表 Dimension Sheet**

型式/Type 内径/符号 Bore Size/Symbol	标准型 Standard type			附磁性 Attach Magnet			D	E		F	G	K1	L	M	N1	
	A	B1	C	A	B1	C		行程 Stroke ≤ 10	行程 Stroke > 10							
12	22	5	17	32	5	27	-	6		4	1	M3×0.5	10.2	2.8	6.3	
16	24	5.5	18.5	34	5.5	28.5	-	6		4	1.5	M3×0.5	11	2.8	7.3	
20	25	5.5	19.5	35	5.5	29.5	36	8		4	1.5	M4×0.7	15	2.8	7.5	
25	27	6	21	37	6	31	42	10		4	2	M5×0.8	17	2.8	8	
32	31.5	7	24.5	41.5	7	34.5	50	12		4	3	M6×1	22	2.8	9	
40	33	7	26	43	7	36	58.5	12		4	3	M8×1.25	28	2.8	10	
50	37	9	28	47	9	38	71.5	15		5	4	M10×1.5	38	2.8	10.5	
63	41	9	32	51	9	42	84.5	15		5	4	M10×1.5	40	2.8	11.8	
80	52	11	41	62	11	51	104	15	20	6	5	M14×1.5	45	4	14.5	
100	63	12	51	73	12	61	124	18	20	7	5	M18×1.5	55	4	20.5	
内径/符号 Bore Size/Symbol	N3	O	P1			P3 P4 R			S	T1	T2	U	V	W	X	Y
12	6	M5×0.8	双边(Double Sides): φ6.5/牙(Thread): M5×0.8/通孔(Through ports): φ4.2			12	4.5	-	25	16.2	23	1.6	6	5	-	-
16	6.5	M5×0.8	双边(Double Sides): φ6.5/牙(Thread): M5×0.8/通孔(Through ports): φ4.2			12	4.5	-	29	19.8	28	1.6	6	5	-	-
20	-	M5×0.8	双边(Double Sides): φ6.5/牙(Thread): M5×0.8/通孔(Through ports): φ4.2			14	4.5	2	34	24	-	2.1	8	6	11.3	10
25	-	M5×0.8	双边(Double Sides): φ6.5/牙(Thread): M6×1.0/通孔(Through ports): φ4.6			15	5.5	2	40	28	-	3.1	10	8	12	10
32	-	G1/8"	双边(Double Sides): φ6.5/牙(Thread): M6×1.0/通孔(Through ports): φ4.6			16	5.5	6	44	34	-	2.15	12	10	18.3	15
40	-	G1/8"	双边(Double Sides): φ6.5/牙(Thread): M8×1.25/通孔(Through ports): φ6.5			20	7.5	6.5	52	40	-	2.25	16	14	21.3	16
50	-	G1/4"	双边(Double Sides): φ6.5/牙(Thread): M8×1.25/通孔(Through ports): φ6.5			25	8.5	9.5	62	48	-	4.15	20	17	30	20
63	-	G1/4"	双边(Double Sides): φ6.5/牙(Thread): M8×1.25/通孔(Through ports): φ6.5			25	8.5	9.5	75	60	-	3.15	20	17	28.7	20
80	-	G3/8"	双边(Double Sides): φ6.5/牙(Thread): M12×1.75/通孔(Through ports): φ9.2			25	10.5	10	94	74	-	3.65	25	22	36	26
100	-	G3/8"	双边(Double Sides): φ6.5/牙(Thread): M12×1.75/通孔(Through ports): φ11.3			30	13	10	114	90	-	3.65	32	27	35	26