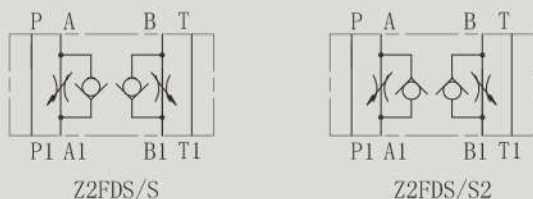


Z2FDS 型叠加式双单向节流阀 Z2FDS SERIES DOUBLE THROTTLE CHECK VALVES



符号 SYMBOL



Z2FDS 型叠加式双单向节流阀通过改变节流口断面大小来调节油路流量，从而实现流量控制，在反向时，液压油直接通过单向阀回油。

Z2FDS series double throttle/check valves are used to restrict flow in one direction while allowing free-flow in the opposite direction as check valves.

▶ 技术参数 Technical data

通径 Size	6	10	16	22
工作压力(MPa) Operating pressure (MPa)	1.5	31.5	31.5	31.5
流量(L/min) Flow rate (L/min)	80	160	250	350
介质温度范围(°C) Fluid temperature range(°C)	0~80°C	0~80°C	0~80°C	0~80°C
重量(千克) Weight(KGS)	1	2.2	4.7	8
阀体(材料)表面处理 Valve body (Material) Surface treatment	铸件 表面磷化处理 casting phosphating surface			
油液清洁度/Oil cleanliness	NAS1638 9级和ISO440620/18/15级 NAS1638 class 9 and ISO4406 class 20/18			

