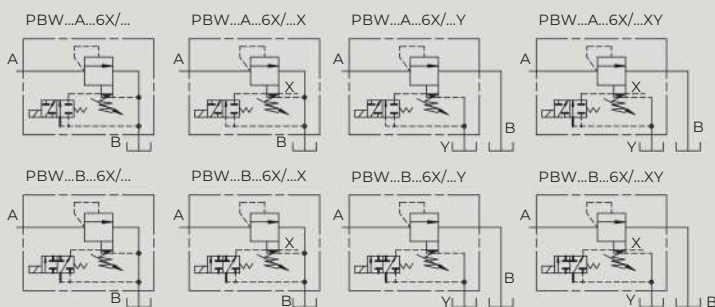


PBW型60/6X系列溢流阀

PBW 60/6X SERIES PILOT OPERATED PRESSURE RELIEF VALVES

符号 SYMBOL



PBW型是先导控制式的电磁溢流阀用于控制液压系统的压力，并能在任意时刻使系统卸荷。

6X系列PBW型阀，性能优于60系列PBW，具有更平稳的调压性能，更低的最低调节压力和调压范围大，通流能力更强等特点。

PBW is a pilot operated solenoid relief valve available to unload system pressure.

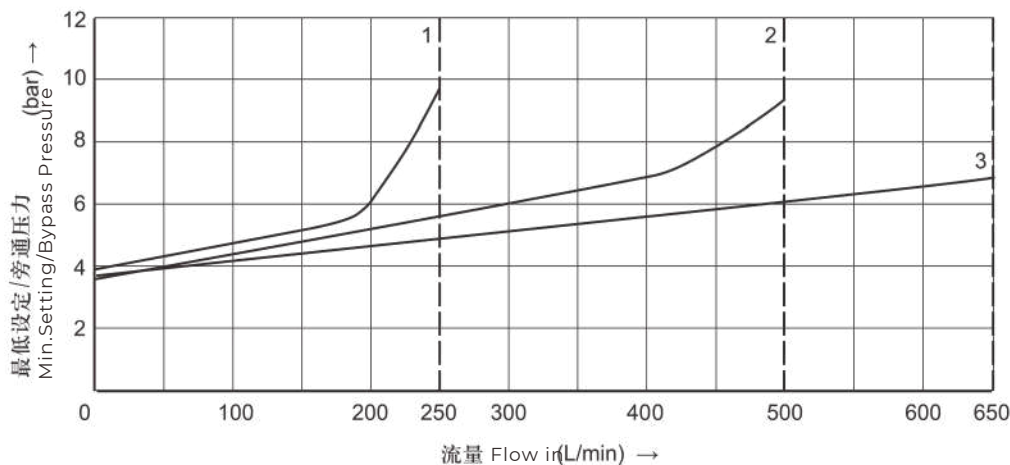
The performance of 6X series is superior than 60 series, the 6X series can be used to control the pressure of hydraulic systems smoothly in a wide range.

▶ 技术参数 Technical data

通径 Size	10		20		30	
系列号 Series No	60	6X	60	6X	60	6X
工作压力(Mpa) Operating pressure(Mpa)	31.5	35	31.5	35	31.5	35
最大流量(L/min) Max. flow rate(L/min)	200	250	400	500	600	650
介质温度(°C) Fluid temperature(°C)	-20~ 70					
过滤精度(μm) Filtration accuracy(μm)	25					
重量(千克) Weight(KGS)	PBW 4.7		5.5		6.8	
阀体 (材料) 表面处理 Valve body (Material) Surface treatment	铸件 表面磷化处理 casting phosphating surface					
油液清洁度/Oil cleanliness	NAS16389 级和ISO4406 20/18/15级 NAS1638 class 9 and ISO4406 class 20/18/15					

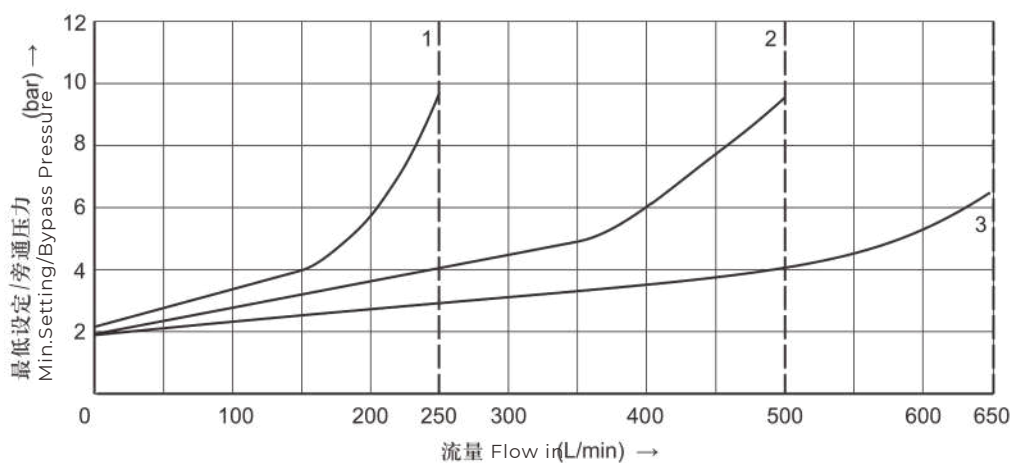
- 特性曲线 (在使用 HLP46, 油=40°C±5°C时测得)
Characteristic curves (measured with HLP46, Voil=40°C±5°C)

最低设定压力和旁通压力与流量的关系 Characteristic of Min.Setting Pressure.bypass pressure and flow
标准型 Standard



- 1. 通径 Size 10
- 2. 通径 Size 20
- 3. 通径 Size 30

最低设定压力和旁通压力与流量的关系 Charateristics of Min.Setting Pressure.bypass presure and flow
"U"型 Type "U"



- 1. 通径 Size 10
- 2. 通径 Size 20
- 3. 通径 Size 30

注意!

此特性曲线在控制油外部零压回油时测得。
对于控制油内部回油, 进口压力增加了T口的压力值。

Attention!

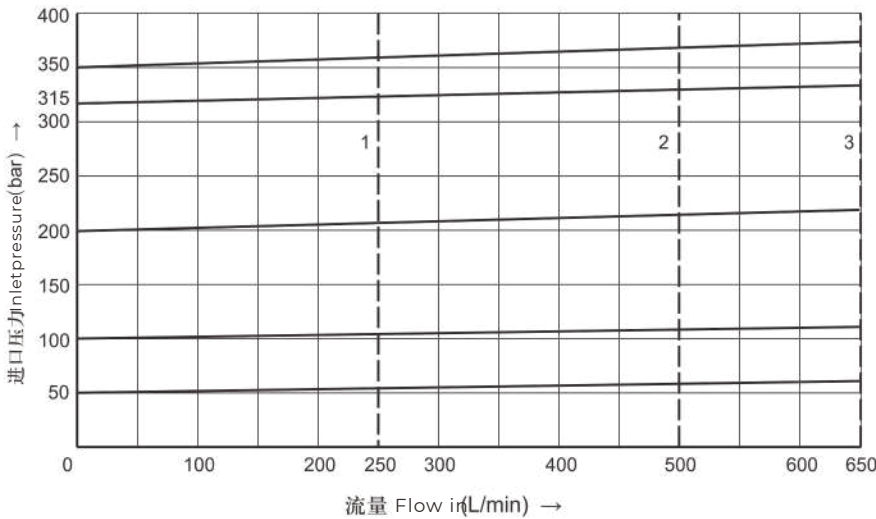
The curves is measured without pressure when control oil back to the tank.
Refers to the back into housing of the control oil,the pressure of "T" port has increased against the input pressure.

此特性曲线在整个流量范围内
对于出口压力 $p_T = 0$ 有效!

The curves are available when the output pressure $P_t=0$ within the flow ranges.

▶ 特性曲线 (在使用 HLP46, 油=40°C±5°C时测得)
Characteristic curves (measured with HLP46, Voil=40°C±5°C)

进口压力与流量的关系 Characteristic of inlet Pressure and flow



- 1. 通 径 Size 10
- 10 2. 通 Size 2
- 径 20 0
- 3. 通 径 Size 3
- 30 0

👉 注意!

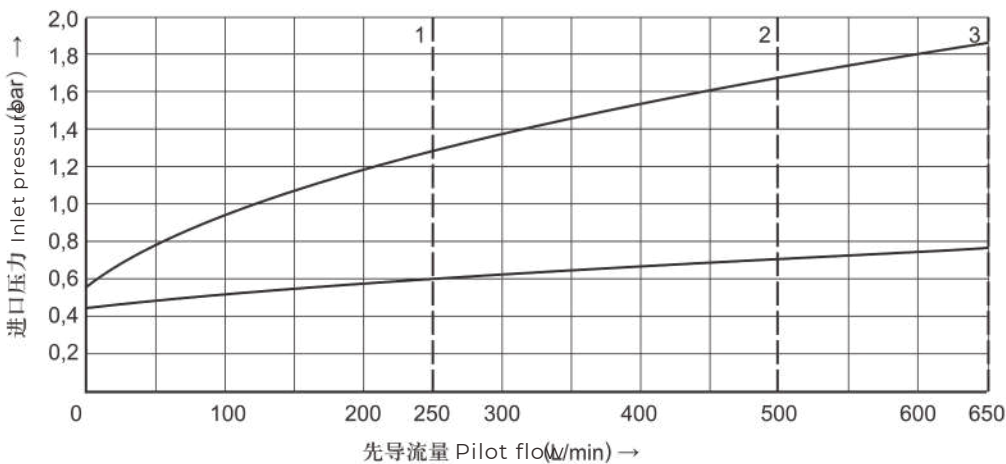
此特性曲线在控制油外部零压回油时测得。
对于控制油内部回油, 进口压力增加了T口的压力值。

👉 Attention!

The curves is measured without pressure when control oil back to the tank.
Refers to the back into housing of the control oil, the pressure of "T" port has increased against the input pressure.

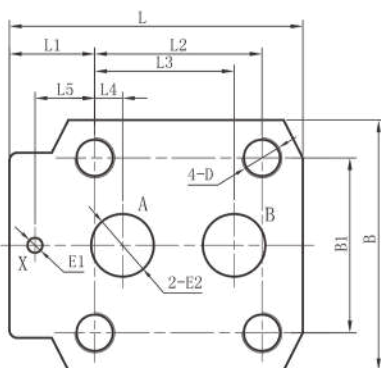
▶ 特性曲线 (在使用 HLP46, 油=40°C±5°C时测得)
Characteristic curves (measured with HLP46, Voil=40°C±5°C)

先导流量 Pilot flow

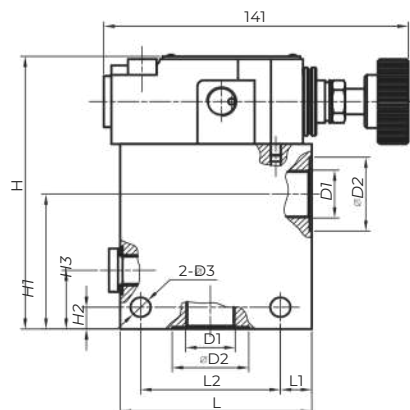


- 1. 通 径 Size 10
- 10 2. 通 10
- 径 20 Size
- 3. 通 径 20
- 30 Size

▶ 板式底板安装尺寸 Subplate mounting



▶ 管式连接尺寸 Threaded connections



▶ 板式底板安装尺寸 Subplate mounting

型号 Model	L	L1	L2	L3	L4	L5	B	B1	D	E1	E2
PBW1	90	23.5	54	47.6	22.2	0	78	54	M12/26	Φ	Φ12
0	117	34	66.7	55.6	11.1	23.8	100	69.8	M16/26	6	Φ25
PBW2	148	41.5	88.7	76.2	12.7	31.7	115	82.5	M18/26	Φ	Φ32
0										6	
PBW3										Φ	
0										7	

▶ 管式连接尺寸 Threaded connections

型号 Model	D1		D2	D3	L	L1	L2	H	H1	H2	H3
	公制 Metric	英制 Inch									
PB8G	M18×1.5	G 3/8"	2	9	85	14	6	125	2	10	6
PB10G	M22×1.5	G 1/2"	8	9	85	14	2	125	7	10	2
PB15G	M27×2	G 3/4"	3	9	85	14	6	125	2	10	6
PB20G	M33×2	G 1"	4	9	85	14	2	125	7	10	2
PB25G	M42×2	G 1 1/4"	4	9	100	18	6	13	2	13	6
PB30G	M48×2	G 1 1/2"	2	9	100	18	2	8	7	13	2

PB	W	10	*	*	1	60/31.5	*	*	DC24	N2	Z5L	*	0*
----	---	----	---	---	---	---------	---	---	------	----	-----	---	----

型号 Model

W = 带换向阀
W=With directional valve

口径 Size
板式: 10;20;30
管式: 8;10;15;20;25;30
Subplate mounting:10;20;30
Threaded connection:8;10;15;
20;25;30

A=常闭 A=Normally closed
B=常开 B=Normally open

无=板式 No code=subplate mounting
G=管式 G=Threaded connection

1=带手轮; 2=不带手轮
1=Hand wheel
2=Without hand wheel

系列号: 60系列; 6X系列 Series number:60;6X

压力等级 Pressure range (Mpa) 5;10;20;31.5

无 = 丁晴橡胶
No code=NBR seals
V= 氟橡胶
V=FPM seals

无=英制;2=公制
No code=Inch thread;
2=Metric thread

Z5L=带灯大方形插头
Z5L=Big quadrate
plug with light

N = 有故障检查按钮
N=With manual override

电压 Voltage AC240;C10
DC24;DC12

无标记 = 主阀芯硬弹簧
U = 主阀芯软弹簧
No Code=Standard
U=For min.cracking pressure

无=先导控制油内供内排
X=先导控制油外供内排
Y=先导控制油内供外排
XY=先导控制油外供外排
No code=Internally pilot, internally drained
X=Externally pilot, internally drained
Y=Internally pilot, externally drained
XY=Externally pilot, externally drained