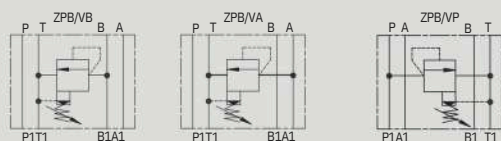


ZPB10型叠加式溢流阀

ZPB10 SERIES MODULAR RELIEF VALVES

符号 SYMBOL



ZPB 型压力控制阀是叠加板结构的先导式溢流阀。

Pressure relief valves of ZPB series are pilot operated style modular valves.

▶ 技术参数 Technical data

口径 Size	10
工作压力(MPa) Operating pressure (MPa)	31.5
流量(L/min) Flow rate (L/min)	100
油温范围(°C) Oil temperature range(°C)	-20 ~ 70
重量(千克) Weight(KGS)	ZPB 2.6
阀体(材料)表面处理 Valve body (Material) Surface treatment	铸件 表面磷化处理 casting phosphating surface
油液清洁度/Oil cleanliness	NAS1638 9级和ISO4406 20/18/15级 NAS1638 class 9 and ISO4406 class 20/18/15

Z PB 10 VA 1 40 315 V *

叠加式
Modular type

型号
Model

口径: 10
Size: 10

溢流方向 Relief from
VA: A → T
VB: B → T
VP: P → T

附加说明
For further details

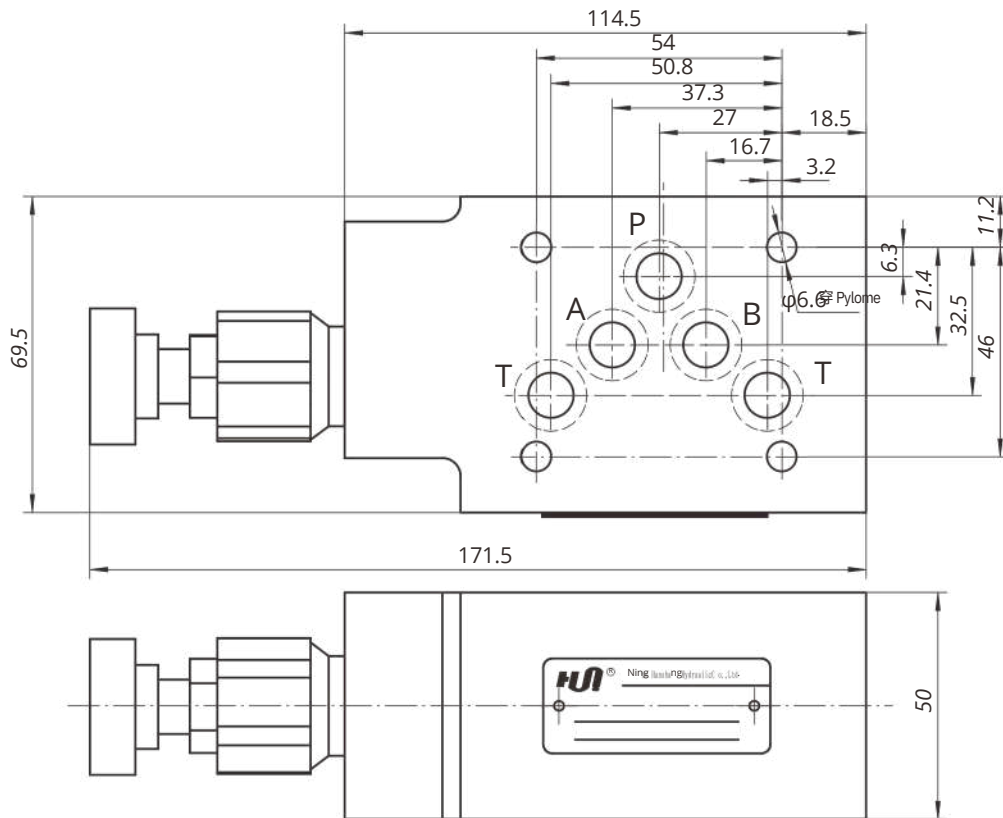
无 = 丁晴橡胶
V = 氟橡胶
No code = NBR seals for petroleum oils
V = FPM seals for phosphate ester

Pressure range 压力等级
50 = 5Mpa
100 = 10Mpa
200 = 20Mpa
315 = 31.5Mpa

系列号
Series number

1 = 手柄
1 = handwheel

▶ ZPB10VA外形尺寸和安装 ZPB10VA External Dimensions and Fittings



▶ ZPB10VP VB外形尺寸和安装 ZPB10VP VB External Dimensions and Fittings

