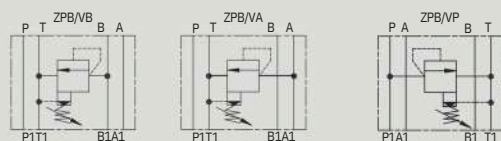


## ZPB6型叠加式溢流阀

### ZPB6 SERIES MODULAR RELIEF VALVES

符号 SYMBOL



ZPB 型压力控制阀是叠加板结构的先导式溢流阀。

Pressure relief valves of ZPB series are pilot operated style modular valves.

#### ▶ 技术参数 Technical data

通径 Size	6	
工作压力(MPa) Operating pressure (MPa)	31.5	
流量(L/min) Flow rate (L/min)	60	
油温范围(°C) Oil temperature range(°C)	-20~ 70	
重量(千克) Weight(KGS)	ZPB	1.3
阀体 (材料) 表面处理 Valve body (Material) Surface treatment	铸件 表面磷化处理 casting phosphating surface	
油液清洁度/Oil cleanliness	NAS1638 9级和ISO440620/18/15级 NAS1638 class 9 and ISO4406 class 20/18/15	

叠加式  
Modular type

型号  
Model

通径:6  
Size:6

溢流方向 Relief from  
VA:A→T  
VB:B→T  
VP:P→T

Z PB 6 VA 1 40 315 V \*

附加说明  
For further details

无 = 丁晴橡胶  
V = 氟橡胶  
No code = NBR seals for petroleum oils  
V = FPM seals for phosphate ester

Pressure range 压力等级  
50 = 5Mpa  
100 = 10Mpa  
200 = 20Mpa  
315 = 31.5Mpa

系列号  
Series number

1 = 手柄  
1 = handwheel

